

## **APPENDIX D**

# **CULTURAL RESOURCES MEMORANDUM**

**This page intentionally left blank**

## MEMORANDUM

**DATE:** October 12, 2020

**To:** Kurth B. Nelson, III, Principal Planner, City of Dana Point

**FROM:** Kerrie Collison, RPA, Associate/Senior Cultural Resources Manager, LSA

**SUBJECT:** Record Search Results for the Dana Point Harbor Hotels Project in Dana Point, Orange County, California (LSA Project No. DPC2001)

This memorandum presents the results of the cultural resources record search for the proposed Dana Point Harbor Hotels Project (project) in Dana Point, Orange County, California. The record search was conducted to do the following: (1) establish the status and extent of previously recorded sites, surveys, and excavations in and adjacent to the project site; and (2) note what site types might be expected to occur within the project site based on the existing data from archaeological sites located within 0.5 mile of the site.

### PROJECT LOCATION AND DESCRIPTION

The project location is depicted on Figure 1 (Attachment B) on the United States Geological Survey (USGS) *Dana Point, California* 7.5-minute topographic quadrangle map in Section 22 of Township 8 South, Range 9 West, San Bernardino Baseline and Meridian (USGS 1975). The project site is located at 24800 Dana Point Harbor Drive, and is currently developed with the Dana Point Marina Inn on the central portion of the project site and two boater services buildings with surface parking reserved for boaters on the southern portion of the project site (Attachment B, Figure 2).

The proposed project involves the demolition of the existing Dana Point Marina Inn, two boater service buildings, and parking areas on the project site and includes the development of two hotels, one of which would include space for boater services, associated ancillary uses, and parking. Also included in the proposed project are associated infrastructure improvements necessary to facilitate pedestrian and vehicular access to and from the project site, landscaping improvements, and utility upgrades necessary to implement the proposed project. Dana House Hotel would be designed as a boutique hotel including 130 market-rate rooms and associated amenities. Dana Point Surf Lodge would be an affordable hotel that includes 139 rooms, three of which would be developed as dorm-style rooms, and associated amenities.

### RECORD SEARCH

On September 14, 2020, a record search at the South Central Coastal Information Center (SCCIC) at California State University, Fullerton, was conducted by Michelle Galaz, Assistant Coordinator at the SCCIC. The SCCIC, an affiliate of the California Office of Historic Preservation (OHP), is the official repository of cultural resources records and reports for Los Angeles County. The record search

included a review of all recorded historic-period and prehistoric cultural resources within a 0.5-mile radius of the project site, as well as a review of known cultural resources surveys and excavation reports. The record search also included a review of the following State and federal inventories:

- Directory of Properties in the Historic Property Data File (OHP 2012). The directory includes the listings of the National Register of Historic Places, National Historic Landmarks, the California Register of Historical Resources, California Historical Landmarks, and California Points of Historical Interest.
- California Historical Landmarks (OHP 1996).
- California Points of Historical Interest (OHP 1992).
- Five Views: An Ethnic Historic Site Survey for California (OHP 1988).
- California Inventory of Historic Resources (OHP 1976).

### Record Search Results

The record search results indicate that one previously conducted cultural resources study has included the project site: OR-02873 (an archaeological field survey). An additional 28 cultural resources studies have been conducted within 0.5 mile of the project site. These studies consist of archaeological surveys (20), overview reports (2), environmental planning documents (3), archaeological monitoring reports (2), and an architectural evaluation (1).

As a result of these previous cultural resources studies, no cultural resources have been previously recorded within the project site. In total, 32 cultural resources have been previously recorded within 0.5 mile of the project site: historic-period buildings (26), historic-period structures (3), a historic-period boat (1), a historic-period viewpoint (1), and a precontact Native American site (1). The nearest historic-period resource to the project site is a historic-period building, approximately 500 feet northwest of the project site. The southeasternmost boundary of the precontact Native American site (P-30-000012) is approximately 1,000 feet northwest of the project site, at an elevation of approximately 120 feet on the bluff above the harbor.

### AERIAL PHOTOGRAPHS AND HISTORIC MAPS

According to available aerial photographs and historic maps of the project site, the project site was constructed between 1967 and 1977. Aerial photographs dated to 1938, 1946, 1952, and 1967 show that the current project site was located offshore, before construction of the harbor. Historic maps dated to 1949, 1959, 1964, and 1970 depict the project site as located in the ocean. Dana Point Harbor in its mostly-current form appears in the 1977 aerial photograph and all more-recent photographs, and does not appear until 1978 in topographic maps dated to 1978 and later (NETR 2020).

### SUMMARY AND RECOMMENDATIONS

While 32 cultural resources have been previously recorded within 0.5 mile of the project site, all but one of those resources date to the historic period. The historic-period resources would not be

impacted by construction of the proposed project. One precontact Native American site (P-30-000012) is located within 1,000 feet of the project site, at an elevation of approximately 120 feet on the bluff above the harbor. However, aerial photographs and historic maps demonstrate that the project site was located offshore before construction of the harbor, and would have been constructed using imported sediments, which would not contain subsurface archaeological cultural resources.

Given that the project site was constructed using imported sediments, the likelihood of encountering intact subsurface archaeological cultural resources during ground-disturbing construction activities is low. As such, no additional cultural resource studies are recommended for the proposed project. If human remains are encountered, the regulatory process outlined in California Health and Safety Code Section 7050.5 must be followed, which involves coordination with the Native American Heritage Commission and a Native American Most Likely Descendant.

If you have any questions concerning the content or the intent of this memorandum, please contact me at [kerrie.collison@lsa.net](mailto:kerrie.collison@lsa.net) or (805) 782-0745.

Attachments: A – References  
B – Project Figures  
C – CONFIDENTIAL Record Search Results

## ATTACHMENT A

### REFERENCES

#### California Office of Historic Preservation (OHP)

- 1976 California Inventory of Historic Resources. California Department of Parks and Recreation, Sacramento.
- 1988 *Five Views: An Ethnic Historic Site Survey for California*. California Department of Parks and Recreation, Sacramento.
- 1992 California Points of Historical Interest. California Department of Parks and Recreation, Sacramento.
- 1996 California Historical Landmarks. California Department of Parks and Recreation, Sacramento.
- 2012 Directory of Properties in the Historic Property Data File. California Department of Parks and Recreation, Sacramento. April 5.

#### Nationwide Environmental Title Research (NETR)

- 2020 Historic Aerials. Website: <https://www.historicaerials.com/viewer> (accessed September 18, 2020).

#### United States Geological Survey (USGS)

- 1975 *Dana Point, California* 7.5-minute topographic quadrangle. Prepared in 1968. Photorevised in 1975. USGS, Denver, Colorado.

## **ATTACHMENT B**

## **PROJECT FIGURES**



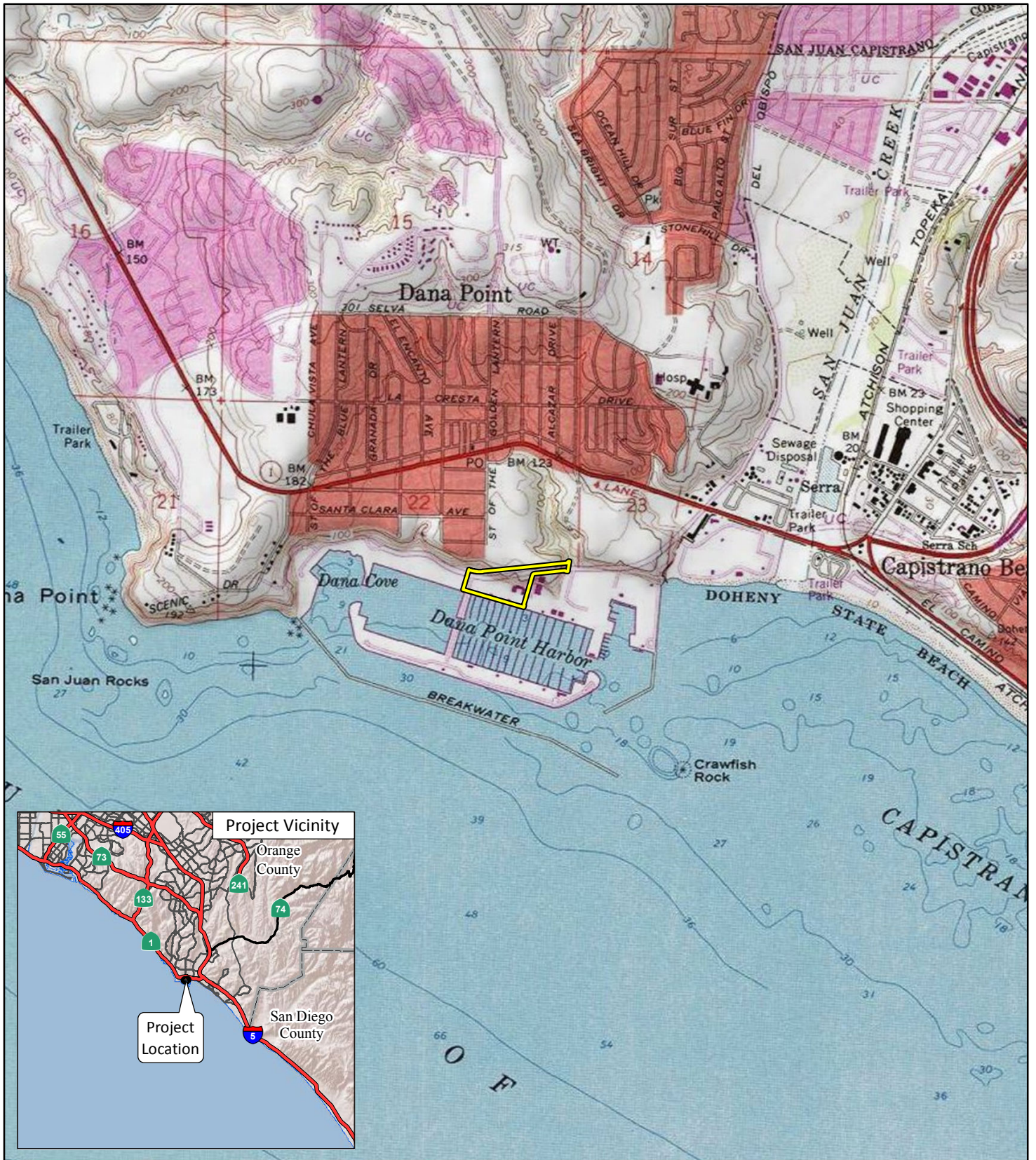


FIGURE 1

LSA

LEGEND

 Project Location



0 1000 2000  
FEET

SOURCE: USGA 7.5' Quad - Dana Point (1975), CA; RD Olsen Development (8/24/2020)

I:\DPC2001\GIS\MXD\ProjectLocation\_USGS.mxd (8/28/2020)

Dana Point Harbor Hotels  
Project Location





LSA

LEGEND

 Project Location



0 100 200  
FEET

SOURCE: Eagle Aerial (6/2019); RD Olsen Development (8/24/2020)

I:\DPC2001\GIS\MXD\ProjectSite.mxd (9/2/2020)

FIGURE 2

Dana Point Harbor Hotels  
Project Site



**ATTACHMENT C**

**CONFIDENTIAL**  
**RECORD SEARCH RESULTS**