

SITE PLAN
 XA-SITING

1/16" = 1'-0"

GUEST ROOM MODULES

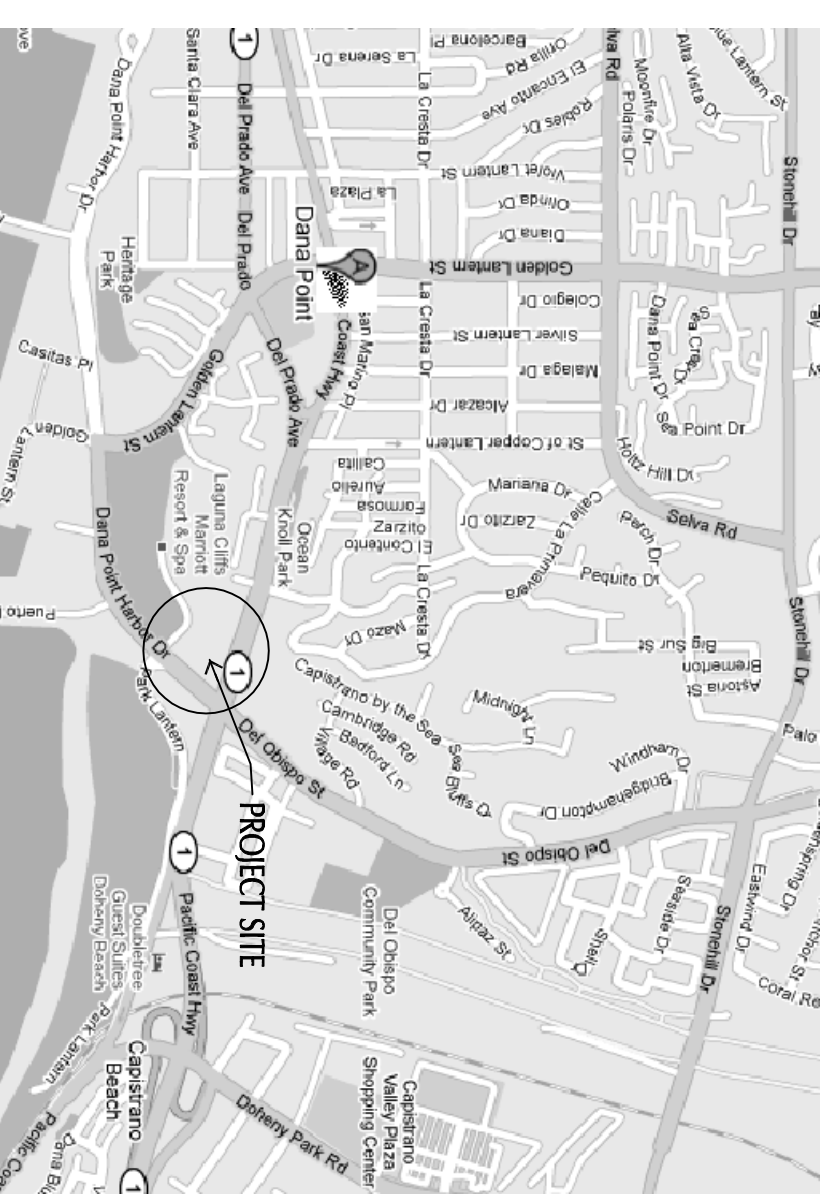
MEZZANINE:	28
2ND FLOOR:	64
3RD FLOOR:	73
4TH FLOOR:	44
5TH FLOOR:	41
TOTAL:	250

PARKING SUMMARY

PARKING REQUIRED	302
PARKING PROVIDED	354
PARKING BREAKDOWN	
HOTEL PARKING (VALET)	232
B1 PARKING	22
B2 PARKING	304
SUB TOTAL	
PUBLIC PARKING (VALET)	42,520 SF
1ST FLOOR/VALET	50
TOTAL	354
PORT COCHERE/DRIVE AISLE PARKING	354
VALET/TAXI-LIMO STAGING	21
GRAND TOTAL ON SITE PARKING	375

GROSS ENCLOSED AREA SUMMARY

B2 BASEMENT / PARKING:	23,235 SF
B1 BASEMENT / PARKING:	55,100 SF
1ST FLOOR:	52,595 SF
MEZZANINE:	24,648 SF
2ND FLOOR:	42,520 SF
3RD FLOOR:	39,409 SF
4TH FLOOR:	25,953 SF
5TH FLOOR:	25,050 SF
TOTAL GROSS AREA:	288,510 SF



BUILDING AREA SUMMARY

VICINITY MAP

SHEET INDEX

A100	SITE PLAN/COVER SHEET
A200	B1 & B2 BASEMENT FLOOR PLANS
A201	FIRST FLOOR PLAN
A202	MEZZANINE & SECOND FLOOR PLAN
A203	THIRD & FOURTH FLOOR PLANS
A204	FIFTH & UPPER ROOF PLANS
A300	EXTERIOR ELEVATIONS
A301	BUILDING SECTIONS
L200	LANDSCAPE CONCEPT FLOOR PLANS
(RENDERING & COLORED ELEVATIONS HAVE ALSO BEEN SUBMITTED)	

PROJECT INFO

OWNER: BEVERLY HILLS HOSPITALITY GROUP
 PROJECT ADDRESS: 23325 DANA POINT HARBOR DRIVE
 DANA POINT, CALIFORNIA 92629
 PLANNING ACTIVITY NUMBER: PA-09-0193
 COASTAL DEVELOPMENT PERMIT NUMBER: CDP-09-0011

LANGDON WILSON INTERNATIONAL ARCHITECTURE PLANNING INTERIORS
 30th FLOOR, PACIFIC SUITE 1111
 1800 AVENUE OF THE STARS
 NEW YORK, NY 10143
 949-833-9193

BEVERLY HILLS HOSPITALITY GROUP

PRELIMINARY CONCEPT PLAN
THE DOHENY HOTEL
 25325 DANA POINT HARBOR DRIVE
 DANA POINT, CALIFORNIA 92629
 COASTAL DEVELOPMENT PERMIT APPLICATION
 PA-09-0193 CDP-09-0011

REV DATE	ISSUED FOR	REV DATE	ISSUED FOR
		12/22/10	COASTAL APP R
		01/25/11	COASTAL APP R
		02/09/11	COASTAL APP R
		04/07/11	ALT 1 RIBC
		09/12/11	OPTION B
		01/26/12	OPTION B REV.
		02/02/14	MOO. OPTION B
		02/24/14	MOO. OPTION B

STAMP

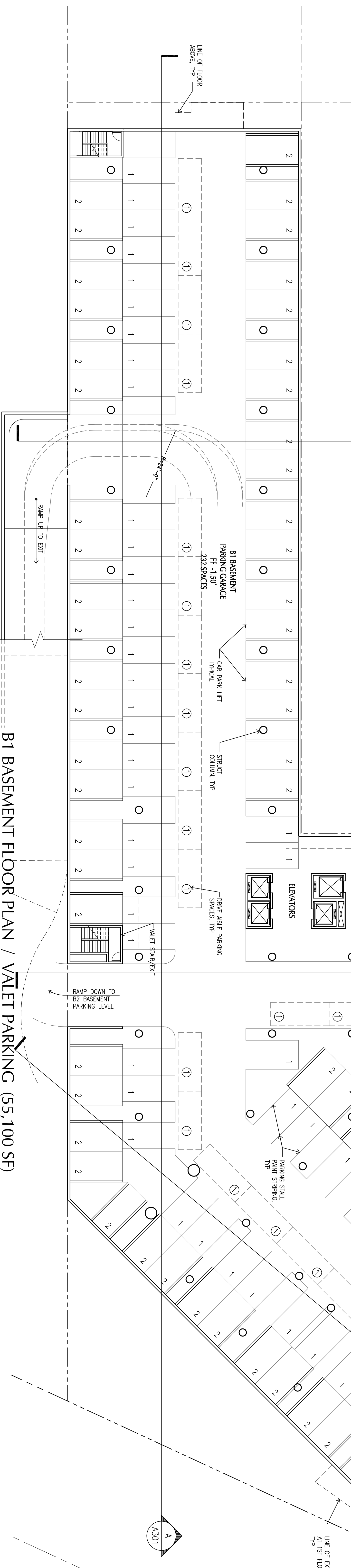
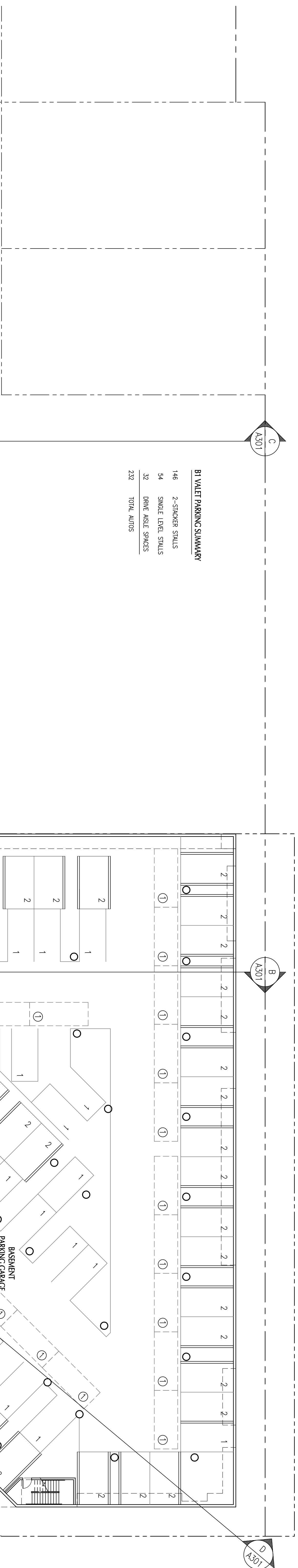
SHEET NUMBER: MODIFIED OPTION B

SCALE: AS NOTED

PROJECT NUMBER: A100

SHEET TITLE: SITE PLAN/COVER SHEET

©Copyright 2011 Langdon Wilson

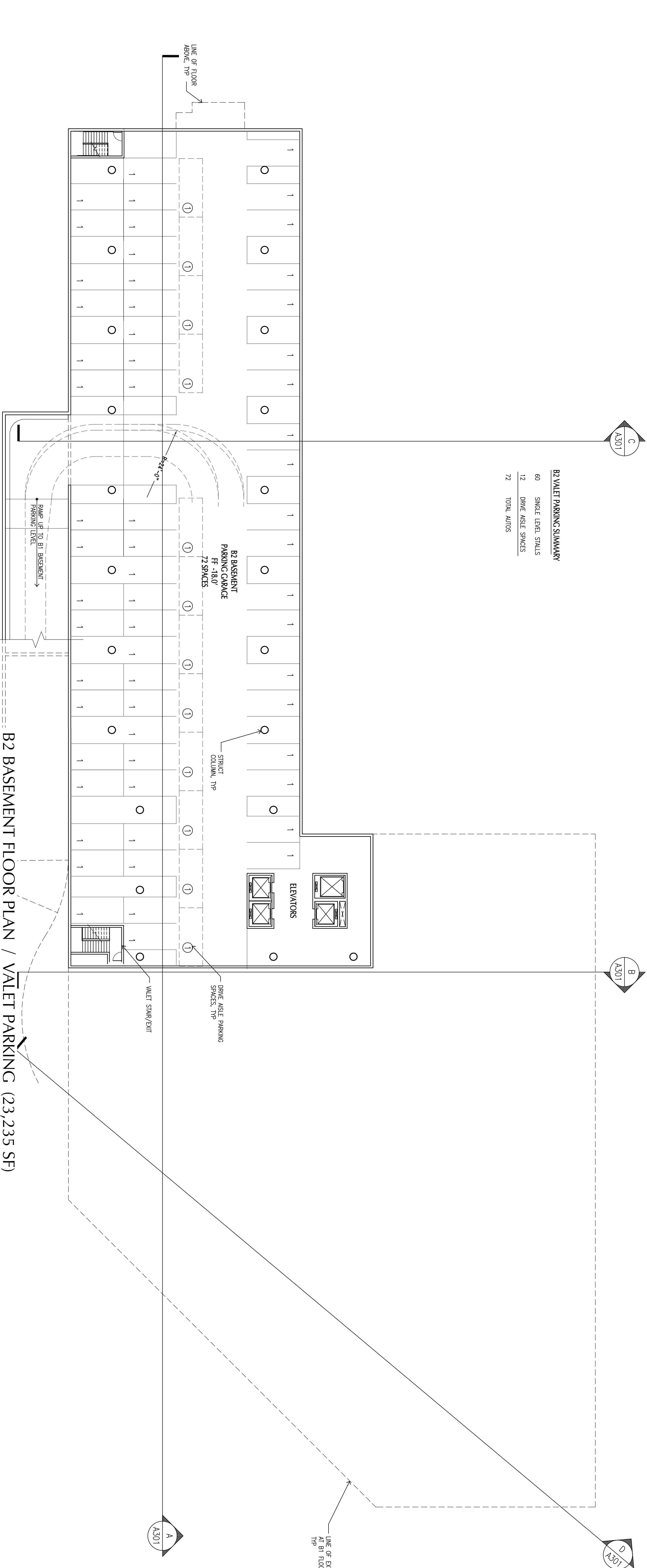


YAF1B1.DWG

1/16" = 1'-0"

B2 VALET PARKING SUMMARY

- 60 SINGLE LEVEL STALLS
- 12 DRIVE AISLE SPACES
- 72 TOTAL AUTOS



YAF1B2.DWG

1/16" = 1'-0"

LANGDON WILSON INTERNATIONAL
ARCHITECTURE PLANNING INTERIORS

3011 WILSON PARK, SUITE 4111
BEVERLY HILLS, CALIFORNIA 91607
NEW YORK 949-833-9193

BEVERLY HILLS HOSPITALITY GROUP

PRELIMINARY CONCEPT PLAN
THE DOHENY HOTEL
25325 DANA POINT HARBOR DRIVE
DANA POINT, CALIFORNIA 92629

COASTAL DEVELOPMENT PERMIT APPLICATION
PA-09-0193 CDP-09-0011

REV	DATE	ISSUED FOR	REV	DATE	ISSUED FOR
1	12/22/10	COASTAL APP'L			
2	01/21/11	COASTAL APP'R			
3	03/09/11	COASTAL APP'R			
4	04/11/11	OPTION B			
5	09/12/11	OPTION B			
6	01/26/12	OPTION B REV.			
7	03/10/14	M.O. OPTION B			

STAMP

DATE: 1/29/10 SCALE: AS NOTED

DRAWN BY: R.S.

JOB NO.: 1021-000 CAD TITLE: A200.DWG

SHEET TITLE: B1 & B2 BASEMENT FLOOR PLANS

SHEET NUMBER: MODIFIED OPTION B

A200

©Copyright 2011 Langdon Wilson

LANGDON WILSON INTERNATIONAL
 ARCHITECTURE
 PLANNING
 INTERIORS

3091 WESTERN PLACE, SUITE 111
 NEWPORT BEACH, CALIFORNIA 92660
 949-483-9193

**BEVERLY HILLS
 HOSPITALITY GROUP**

PRELIMINARY CONCEPT PLAN
THE DOHENY HOTEL
 25325 DANA POINT HARBOR DRIVE
 DANA POINT, CALIFORNIA 92629

COASTAL DEVELOPMENT PERMIT APPLICATION
 PA-09-0193 CDP-09-0011

REV DATE	ISSUED FOR	REV DATE	ISSUED FOR
12/22/10	CONSTR. PERM.	12/22/10	CONSTR. PERM.
01/29/11	CONSTR. PERM. R	02/09/11	CONSTR. PERM. R
04/11/11	OPTION B	04/11/11	OPTION B
04/12/11	OPTION B & REV.	04/12/11	OPTION B & REV.
01/26/12	OPTION B & R.I.	01/26/12	OPTION B & R.I.
02/10/13	OPTION B & R.I.	02/10/13	OPTION B & R.I.
02/24/14	MOD. OPTION B	02/24/14	MOD. OPTION B

STAMP

DATE

11/29/10

SCALE

AS NOTED

DRAWN BY

R.S.

JOB NO.

101-090

CAD FILE

THE DOHENY.HR

SHEET TITLE

FIRST FLOOR PLAN

LOADING OPTION

SHEET NUMBER

MODIFIED

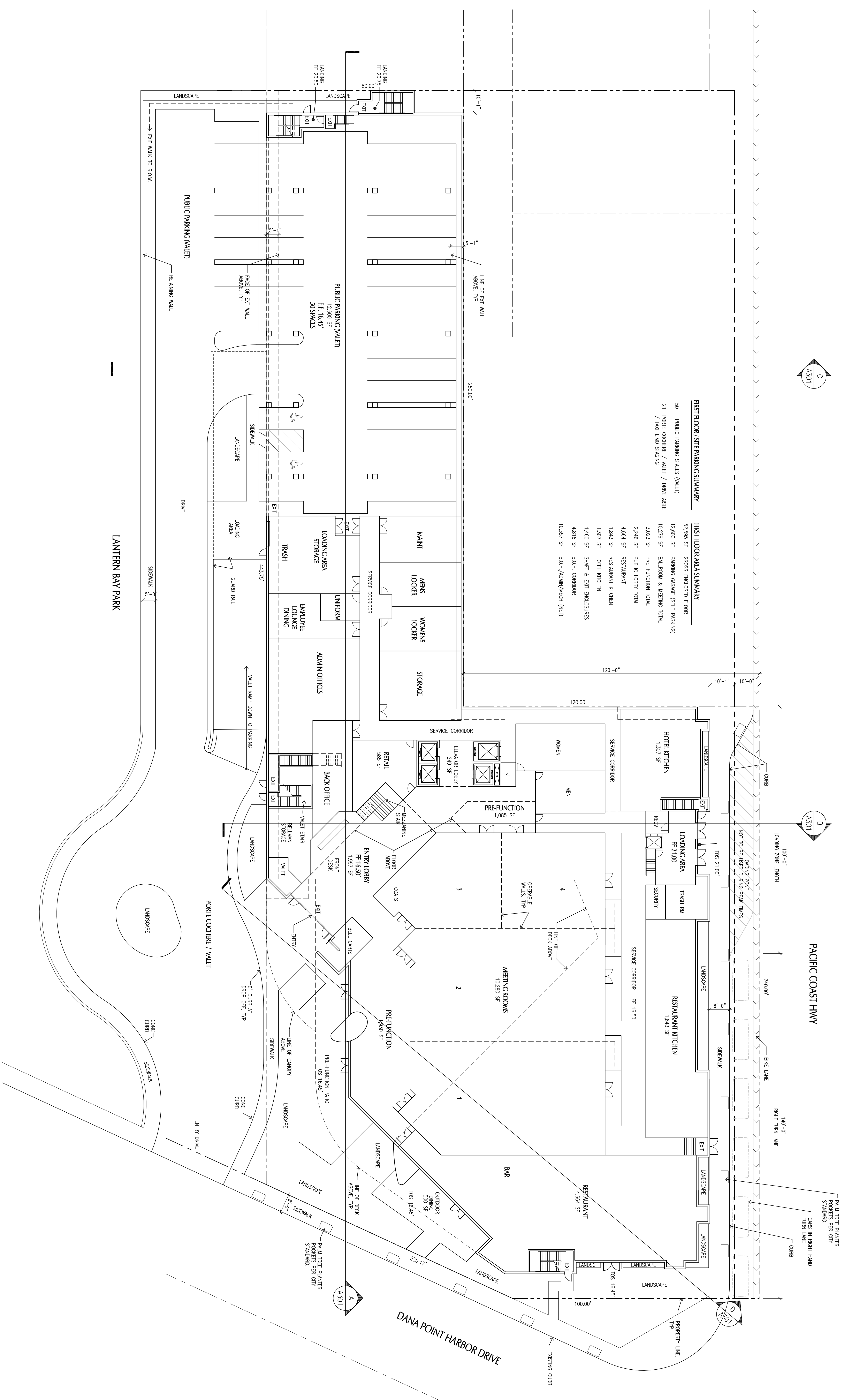
OPTION B

A201

Copyright 2011 Langdon Wilson

FIRST FLOOR PLAN (52,595 SF)
 XAF-01.DWG

1/16" = 1'-0"



FIRST FLOOR / SITE PARKING SUMMARY

50	PUBLIC PARKING STALLS (VALET)
21	PORT COCHERE / VALET / DRIVE ASIDE / TAXI-LIMO STAGING

FIRST FLOOR AREA SUMMARY

52,595 SF	GROSS ENCLOSED FLOOR
12,600 SF	PARKING GARAGE (SEE PARKING)
10,279 SF	RESTAURANT & MEETING TOTAL
3,023 SF	PRE-FUNCTION TOTAL
2,246 SF	PUBLIC LOBBY TOTAL
4,664 SF	RESTAURANT
1,843 SF	RESTAURANT KITCHEN
1,307 SF	HOTEL KITCHEN
1,460 SF	SHAFT & EXIT ENCLOSURES
4,818 SF	BOH / ADMIN (NET)
10,287 SF	BOH / ADMIN (NET)

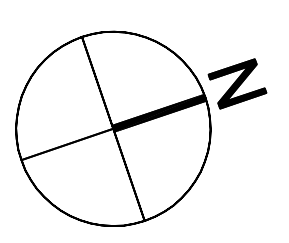
A301

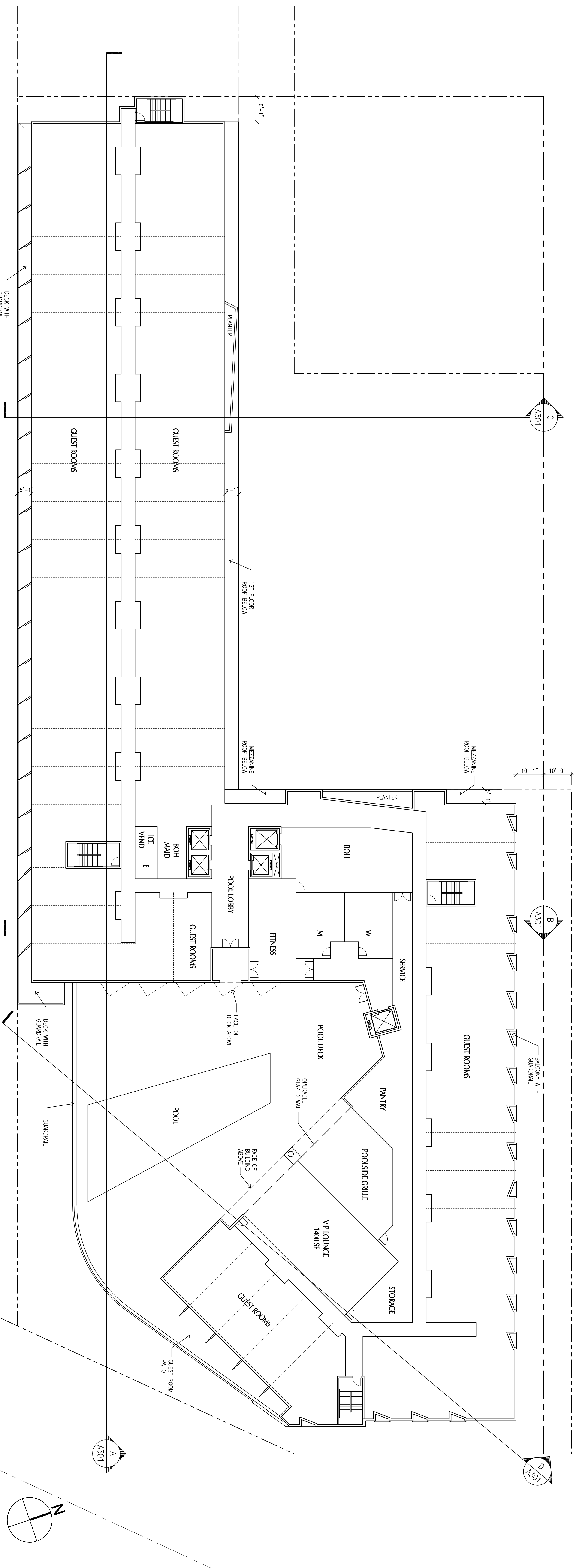
B

PACIFIC COAST HWY

A301

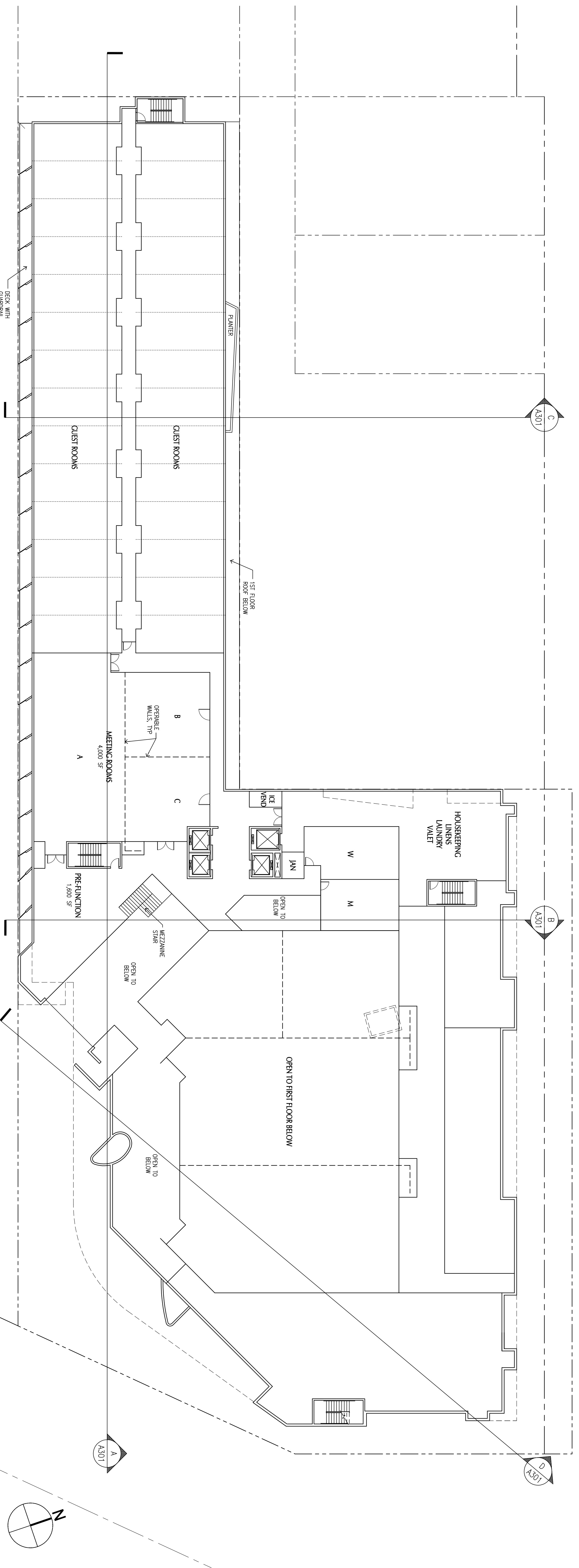
A301





2ND FLOOR PLAN (42,520 SF)

64 MODULES
1/16" = 1'-0"



MEZZANINE FLOOR PLAN (24,648 SF)

28 MODULES
1/16" = 1'-0"

LANGDON WILSON INTERNATIONAL
ARCHITECTURE PLANNING INTERIORS
3091 WESTERLY PLACE, SUITE 411
NEWPORT BEACH, CALIFORNIA 92660
949-833-9193

BEVERLY HILLS HOSPITALITY GROUP

PRELIMINARY CONCEPT PLAN
THE DOHENY HOTEL
25325 DANA POINT HARBOR DRIVE
DANA POINT, CALIFORNIA 92629

COASTAL DEVELOPMENT PERMIT APPLICATION
PA-09-0193 CDP-09-0011

REV DATE	ISSUED FOR	REV DATE	ISSUED FOR
12/22/10	COASTAL PERM		
01/23/11	COASTAL APP'R	09/12/11	OPTION B
01/26/12	OPTION B REV.	03/10/14	MOD. OPTION B

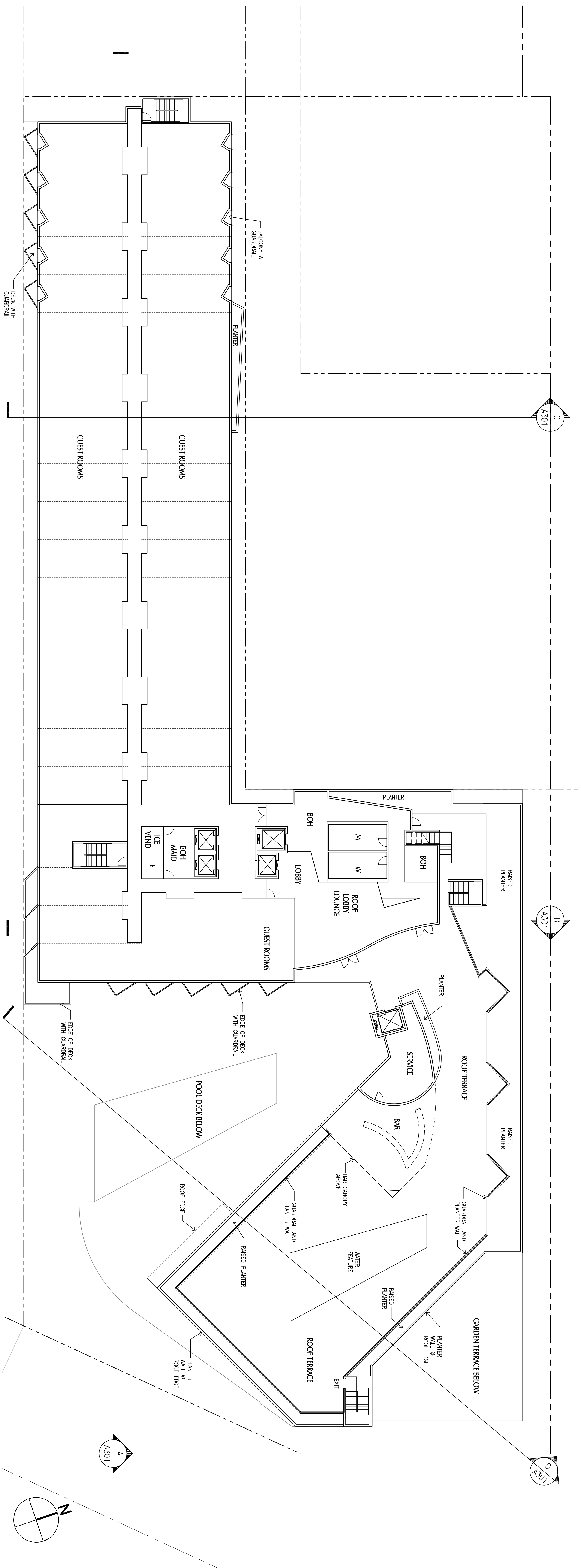
DATE	SCALE
11/29/10	AS NOTED
DRAWN BY: RLS	
JOB NO: 103-069	CAD FILE: 103-069.DWG

MEZZANINE & SECOND FLOOR PLANS

SHEET NUMBER:
MODIFIED OPTION B

A202

© Copyright 2011 Langdon Wilson

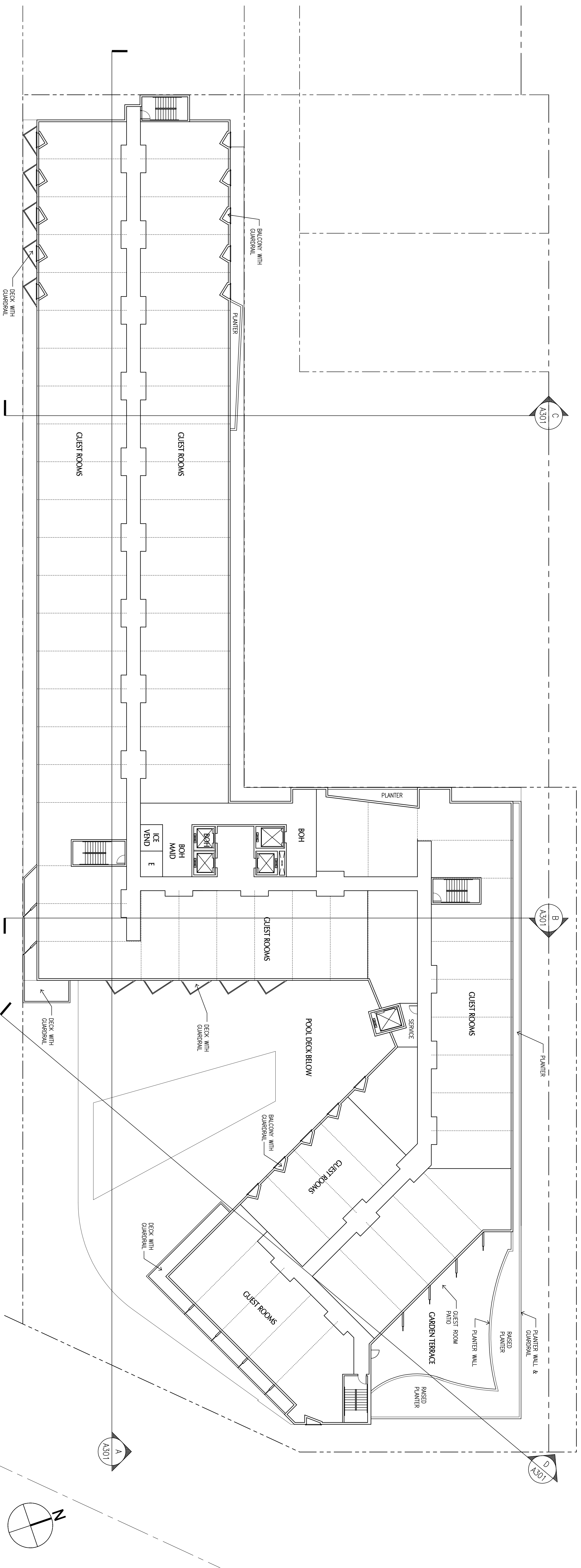


FOURTH FLOOR PLAN (25,953 SF)

YAFLO5.DWG

44 MODULES

1/16" = 1'-0"



THIRD FLOOR PLAN (39,550 SF)

YAFLO4.DWG

73 MODULES

1/16" = 1'-0"

LANGDON WILSON INTERNATIONAL ARCHITECTURE PLANNING INTERIORS
 3091 WESTERLY PLACE, SUITE 411
 NEWPORT BEACH, CALIFORNIA 92660
 949-833-9193

BEVERLY HILLS HOSPITALITY GROUP

PRELIMINARY CONCEPT PLAN
THE DOHENY HOTEL
 25325 DANA POINT HARBOR DRIVE
 DANA POINT, CALIFORNIA 92629

COASTAL DEVELOPMENT PERMIT APPLICATION
 PA-09-0193 CDP-09-0011

REV DATE	ISSUED FOR	REV DATE	ISSUED FOR
		12/22/10	COASTAL PERM
		01/23/11	COASTAL APP R
		09/12/11	OPTION B REV
		01/26/12	OPTION B REV
		02/10/14	MCO, OPTION B

DATE	SCALE
11/29/10	AS NOTED
DRAWN BY: RLS	
CHKD BY: JMS	
CDP TITLE: A203.DWG	

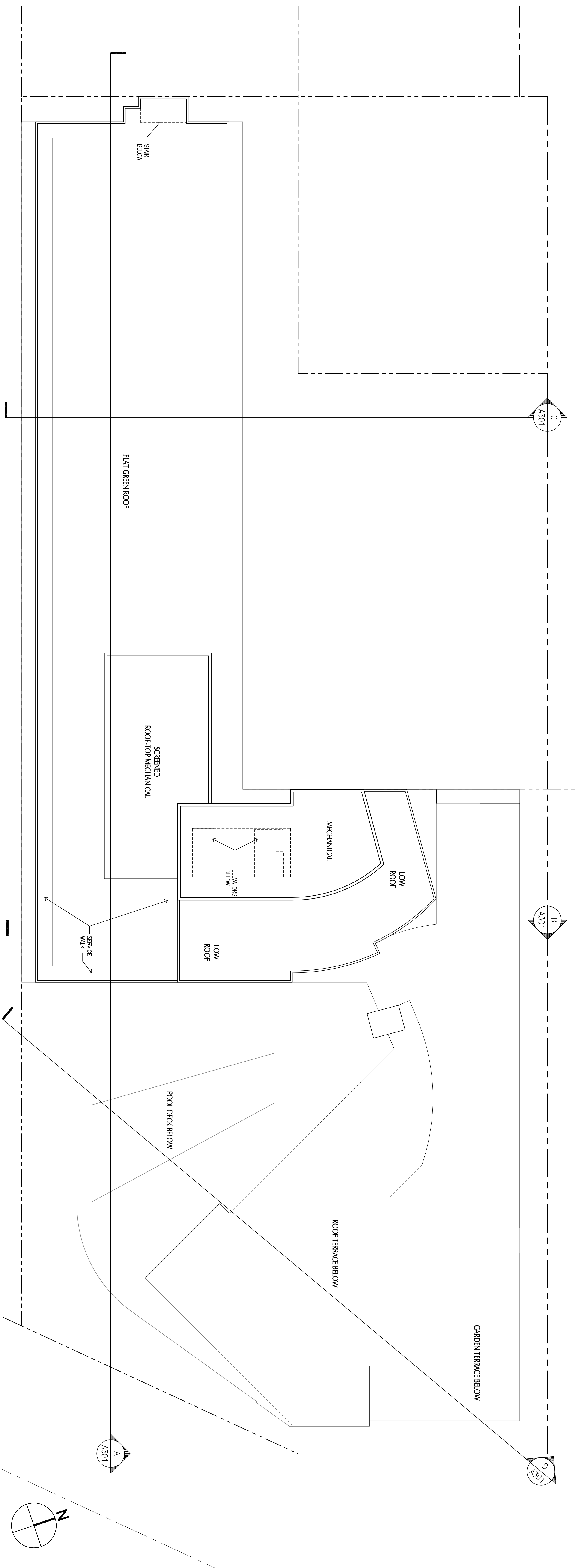
DATE	SCALE
11/29/10	AS NOTED
DRAWN BY: RLS	
CHKD BY: JMS	
CDP TITLE: A203.DWG	

SHEET TITLE:
THIRD & FOURTH FLOOR PLANS

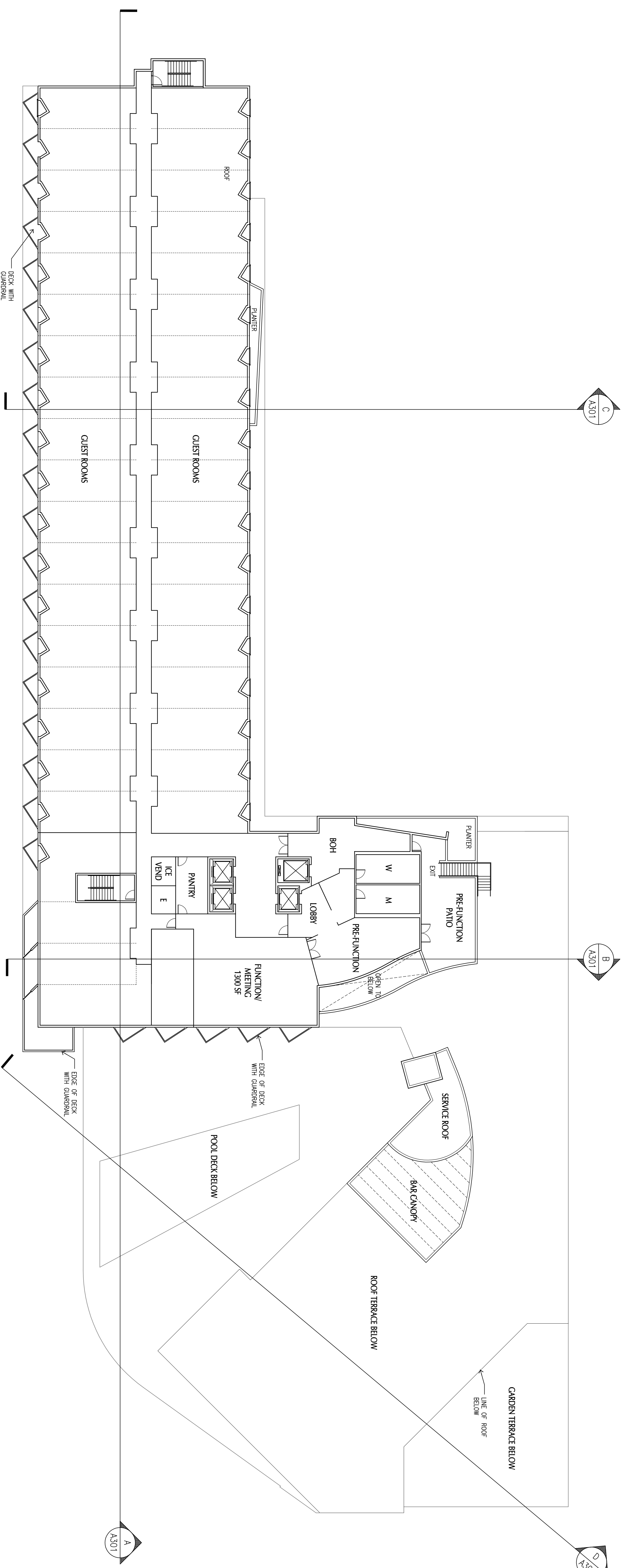
SHEET NUMBER:
MODIFIED OPTION B

A203

©Copyright 2011 Langdon Wilson



UPPER ROOF PLAN
XREF:07.DWG
1/16" = 1'-0"



FIFTH FLOOR PLAN (25,050 SF)
XREF:06.DWG
41 MODULES
1/16" = 1'-0"

LANGDON WILSON INTERNATIONAL
ARCHITECTURE PLANNING INTERIORS
3011 AVENUE OF THE STARS, SUITE 4111
NEW YORK, NY 10105
914-833-9193

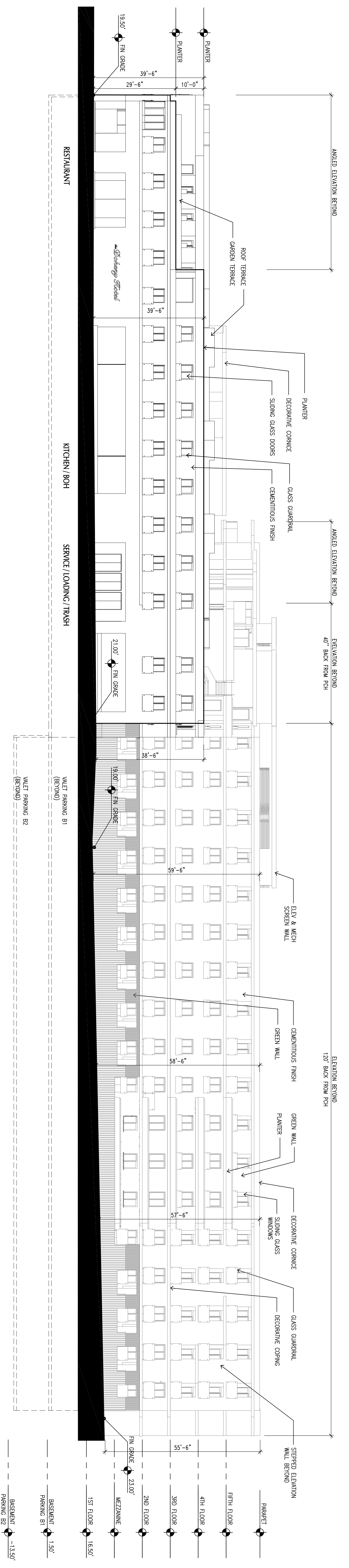
BEVERLY HILLS HOSPITALITY GROUP

PRELIMINARY CONCEPT PLAN
THE DOHENY HOTEL
25325 DANA POINT HARBOR DRIVE
DANA POINT, CALIFORNIA 92629

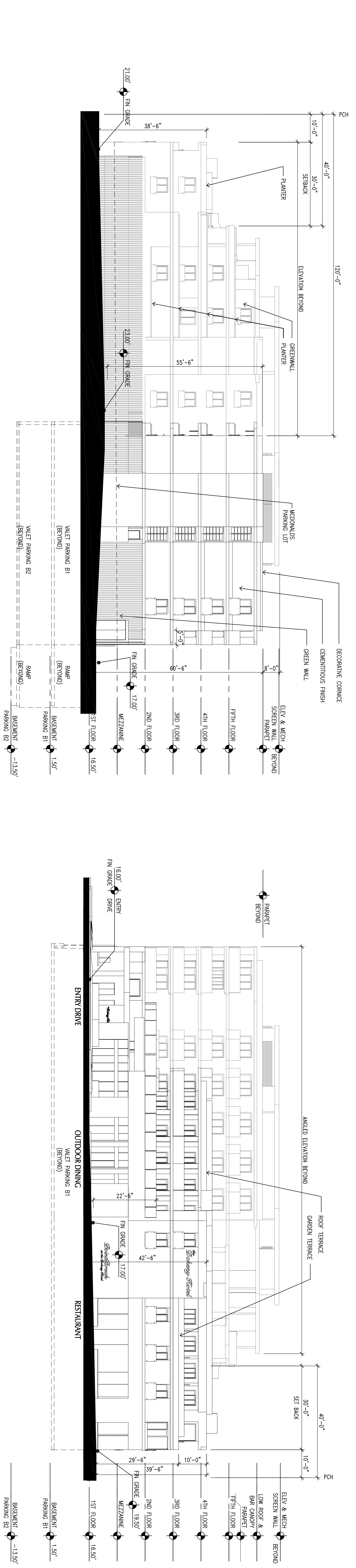
COASTAL DEVELOPMENT PERMIT APPLICATION
PA-09-0193 CDP-09-0011

REV DATE	ISSUED FOR	REV DATE	ISSUED FOR
		12/22/10	COASTAL APPL
		01/21/11	COASTAL APPL R
		09/12/11	OPTION B
		01/29/12	OPTION B REV
		02/19/14	MOD. OPTION B

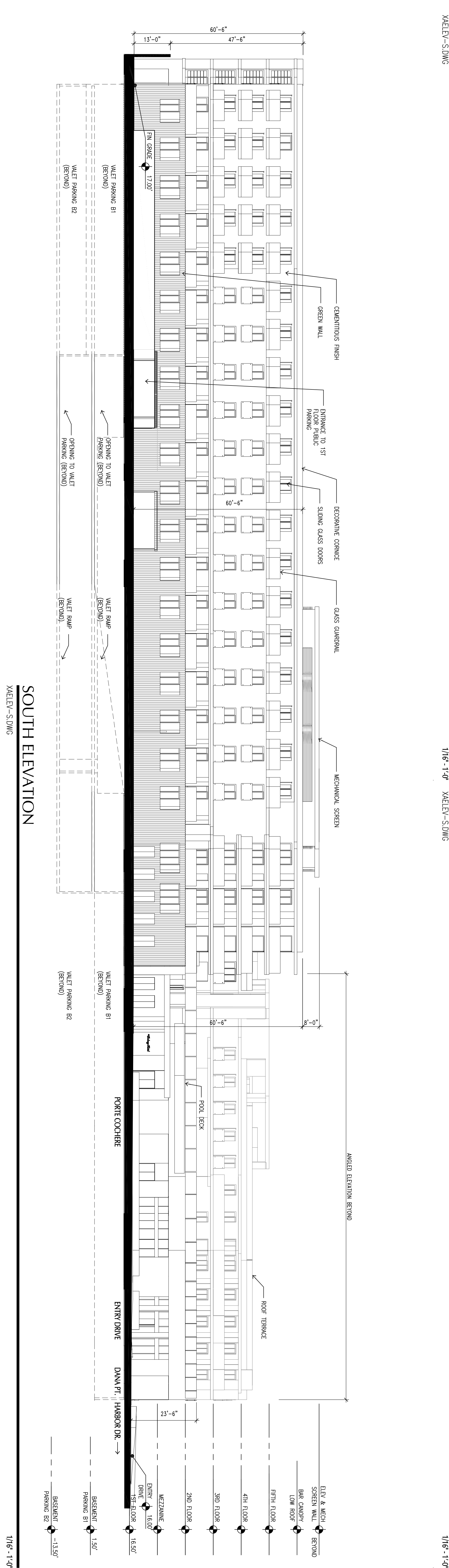
DATE: 04/07/11 SCALE: AS NOTED
DRAWN BY: RJS
JOB NO.: 1021-000 CAD TITLE: XREF:06.DWG
SHEET TITLE: FIFTH FLOOR PLAN & UPPER ROOF PLAN
SHEET NUMBER: MODIFIED OPTION B
A204
© Copyright 2011 Langdon Wilson



NORTH ELEVATION
 XAFLOT.DWG
 1/16" = 1'-0"



WEST ELEVATION
 XAELEV-S.DWG
 1/16" = 1'-0"



SOUTH ELEVATION
 XAELEV-S.DWG
 1/16" = 1'-0"

PRELIMINARY CONCEPT PLAN
THE DOHENY HOTEL
 25325 DANA POINT HARBOR DRIVE
 DANA POINT, CALIFORNIA 92629

COASTAL DEVELOPMENT PERMIT APPLICATION
 PA-09-0193 CDP-09-0011

REV DATE	ISSUED FOR	REV DATE	ISSUED FOR
		12/22/10	COASTAL APP R
		01/31/11	COASTAL APP R
		01/21/11	OPTION B
		01/20/12	OPTION B REV
		02/19/14	MOD. OPTION B

LANGDON WILSON INTERNATIONAL
 ARCHITECTURE
 PLANNING
 INTERIORS

3010 WESTERN PACIFIC SUITE 111
 NEWPORT BEACH, CA 92660
 949-833-9193

**BEVERLY HILLS
 HOSPITALITY GROUP**

REV DATE	ISSUED FOR	REV DATE	ISSUED FOR
		12/22/10	COASTAL APP R
		01/31/11	COASTAL APP R
		01/21/11	OPTION B
		01/20/12	OPTION B REV
		02/19/14	MOD. OPTION B

STAMP

DATE: 1/29/10 SCALE: AS NOTED
 DRAWN BY: R.S.
 JOB NO.: 001-000 CAD TITLE: XAFLOT.DWG

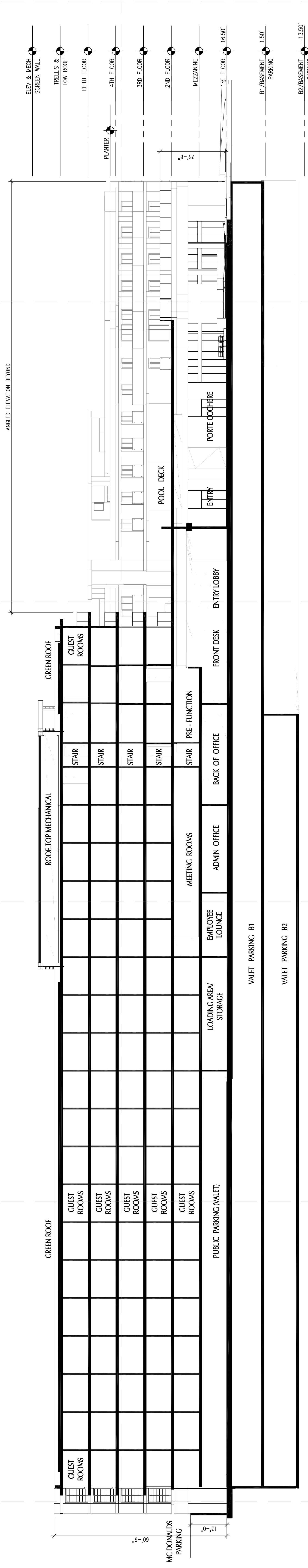
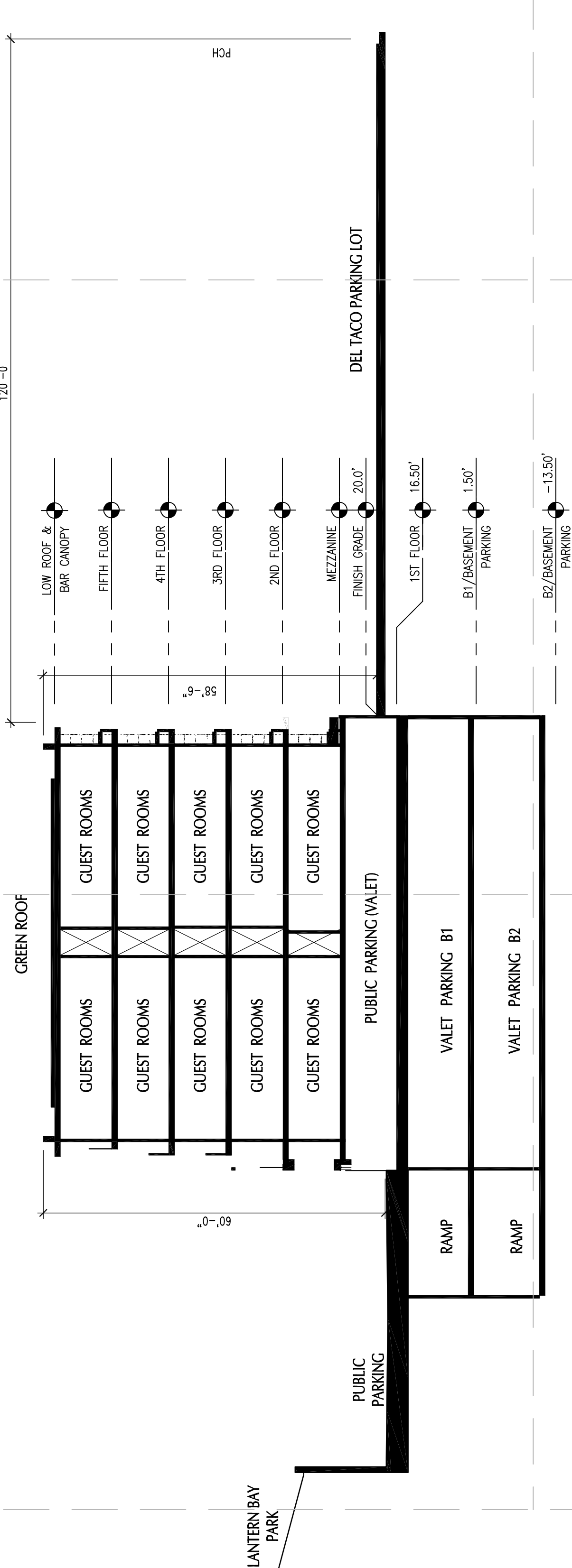
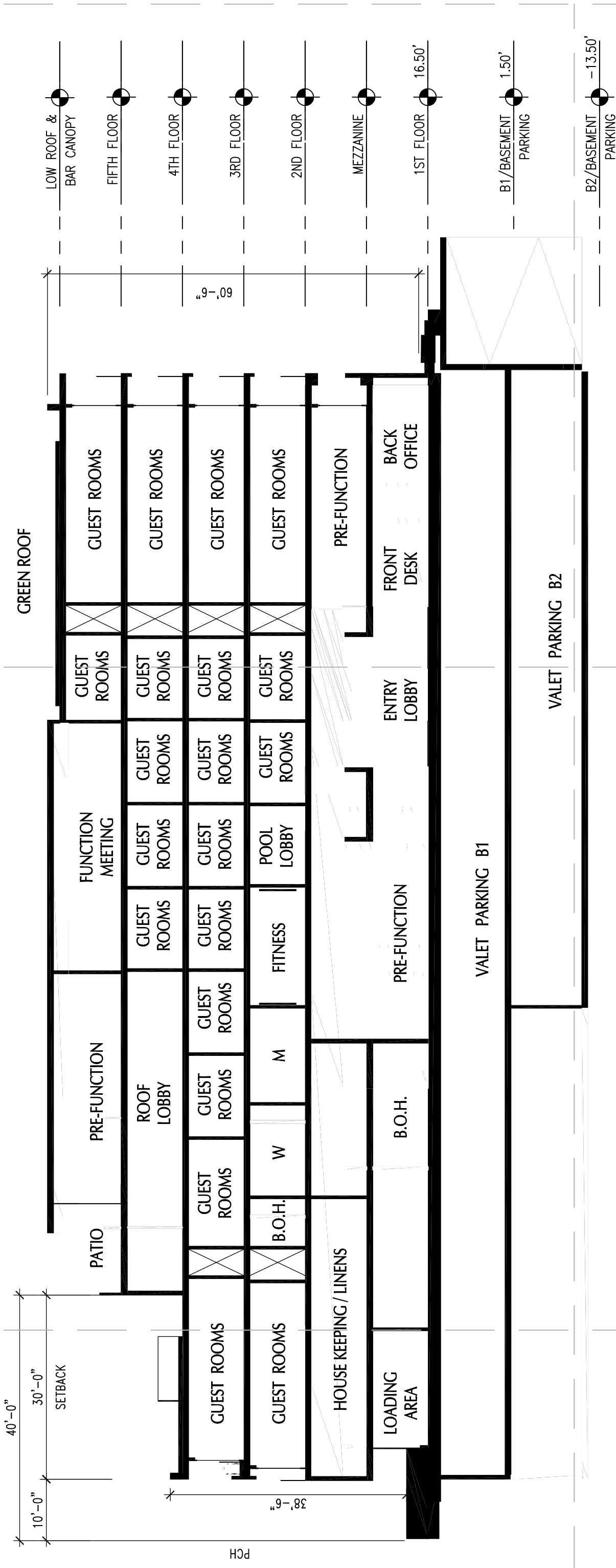
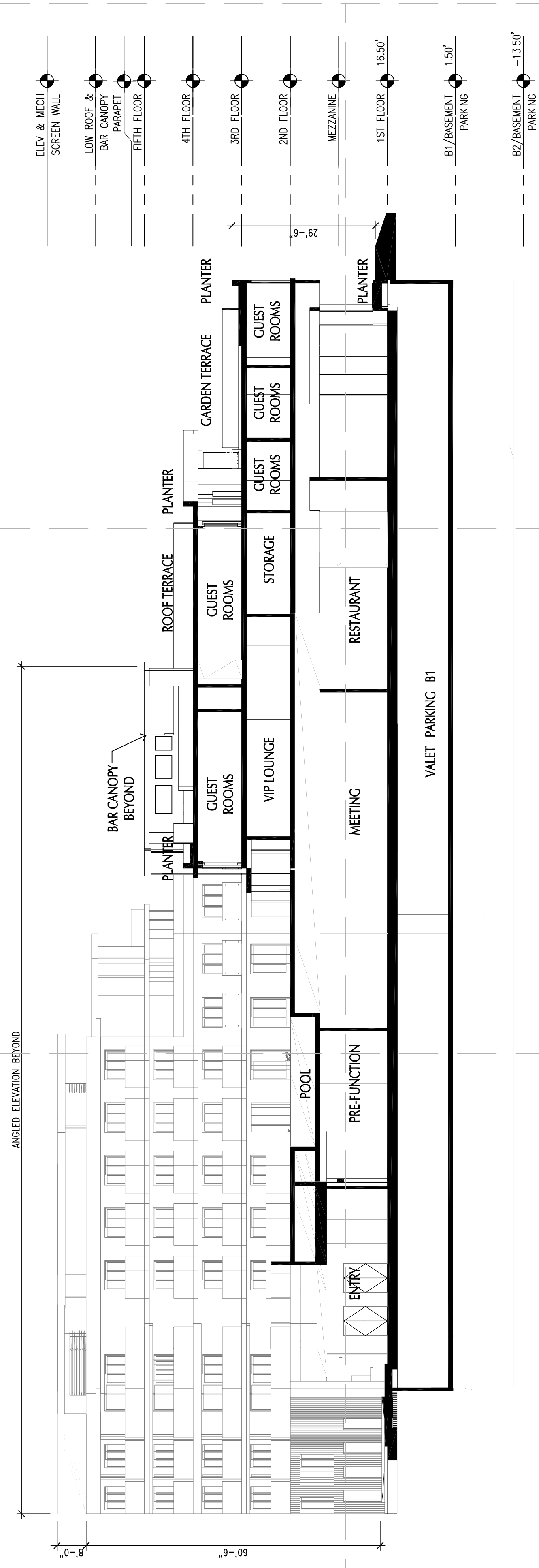
SHEET TITLE
 EXTERIOR ELEVATIONS

SHEET NUMBER
 MODIFIED OPTION B
A300

© Copyright 2011 Langdon Wilson

REV DATE	ISSUED FOR	REV DATE	ISSUED FOR
		12/22/10	COASTAL APP E
		01/21/11	COASTAL APP E
		09/12/11	OPTION B
		01/20/12	OPTION B REV
		03/10/14	MOD. OPTION B

STAMP





WEST ELEVATION

EAST ELEVATION



NORTH ELEVATION



SOUTH ELEVATION

MODIFIED
OPTION B
3/10/ 2014

BEVERLY HILLS HOSPITALITY GROUP

JANUARY 31, 2011
© LANGDON WILSON INTERNATIONAL 2011

the Doheny Hotel

DANA POINT, CALIFORNIA

LANGDON
WILSON
INTERNATIONAL
ARCHITECTURE
PLANNING
INTERIORS