

**PLANT LEGEND**

TREES	BOTANICAL NAME	COMMON NAME	SIZE	WULCOL	QUANTITY
	ARBITUS UNEDO (EVERGREEN ACCENT TREE)	STRAWBERRY TREE	48" BOX	LOW	1
	PLATANUS RACEMOSA (DECIDUOUS CANOPY TREE)	CALIFORNIA SYCAMORE	24" BOX	LOW	11
	LAGERSTROEMIA FAURIEI 'MUSKOGEE' (DECIDUOUS FLOWERING ACCENT TREE)	GRAPE MYRTLE	24" BOX	MED	26
	STRELTIZIA NICOLAI (EVERGREEN FLOWERING ACCENT PALM)	GIANT BIRD OF PARADISE	24" BOX	LOW	1
	MELALEUCA QUINQUENRVA (VERTICAL EVERGREEN TREE)	CAJEPUT TREE	24" BOX	LOW	9
	OLEA EUROPAEA 'SWAN HILL' (ACCENT EVERGREEN TREE)	SWAN HILL NON FRUITING OLIVE	48" BOX	LOW	2
	PHOENIX DACTYLIFERA (VERTICAL ACCENT PALM)	DATE PALM	20' B.T.H.	LOW	8
	RHUS LANCEA (EVERGREEN SHADE TREE)	AFRICAN SUMAC	24" BOX	LOW	6
	EXISTING TREE TO REMAIN SEE EXISTING TREE LEGEND BELOW				
	EXISTING QUEEN PALM TO REMAIN - PROTECT IN PLACE				

SHRUBS	BOTANICAL	COMMON	SIZE	SPACING	WULCOLS
	AGAVE AMERICANA	CENTURY PLANT	5 GAL.	VARIES	VERY LOW
	AGAVE ATTENUATA	CENTURY PLANT	5 GAL.	VARIES	LOW
	ALOE VERA	MEDICINAL ALOE	5 GAL.	VARIES	LOW
	ARBITUS UNEDO	STRAWBERRY TREE	15 GAL.	VARIES	LOW
	BUXUS JAPONICA 'GREEN BEAUTY'	JAPANESE BOXWOOD	5 GAL.	30" O.C.	MED
	CALLISTEMON 'LITTLE JOHN'	DWARF BOTTLEBRUSH	5 GAL.	3" O.C.	LOW
	ELEAGNUS PUNGENS	SILVERBERRY	5 GAL.	4" O.C.	LOW
	HETEROMELES ARBUTIFOLIA	TOYON	15 GAL.	VARIES	LOW
	ISOMERIS ARBOREA	BLADDERPOD	5 GAL.	VARIES	LOW
	LIGUSTRUM JAPONICUM	WAX LEAF PRIVET	5 GAL.	3" O.C.	MED
	OPUNTIA LITTORALIS	PRICKLY PEAR	5 GAL.	VARIES	VERY LOW
	WESTRINGIA FRUITICOSA	COAST ROSEMARY	5 GAL.	4" O.C.	LOW
	XYLOSMA CONGESTUM 'COMPACTUM'	DWARF SHINY XYLOSMA	5 GAL.	VARIES	LOW
<b>ACCENT SHRUBS</b>					
	BOTANICAL	COMMON	SIZE	SPACING	WULCOLS
	ANIGOZANTHOS FLAVIDUS 'GOLD VELVET'	KANGAROO PAW	5 GAL.	3" O.C.	LOW
	BOUGAINVILLEA SPECTABILIS	BOUGAINVILLEA	5 GAL.	5" O.C.	LOW
	MISCANTHUS TRANSMORRISONENSIS	EVERGREEN MISCANTHUS	5 GAL.	4" O.C.	LOW
	MUHLENBERGIA CAPILLARIS	PINK MUHLY	5 GAL.	4" O.C.	LOW
	ROSA SPECIES	ICEBERG FLORIBUNDA ROSE	5 GAL.	3" O.C.	MED
<b>VINE - AT RETAINING &amp; GARAGE WALL ALONG SOUTH</b>					
	BOTANICAL	COMMON	SIZE	SPACING	WULCOLS
	FICUS REPENS	CREeping FIG	5 GAL.	6" O.C.	MED

GROUND COVER PALLETTE	BOTANICAL	COMMON	SIZE	SPACING	WULCOLS
	ACACIA REDOLENS 'DESERT CARPET'	N.C.N.	1 GAL.	TRIANGULAR SPACE 48" O.C.	LOW
	CARISSA MACROCARPA 'GREEN CARPET'	GREEN CARPET NATAL PLUM	1 GAL.	TRIANGULAR SPACE 24" O.C.	MED
	IVA HAYESIANA	POVERTY WEED	1 GAL.	TRIANGULAR SPACE 5" O.C.	LOW
	LAMPFRANTHUS SPECTABILIS	TRAILING ICEP LANT	1 GAL.	TRIANGULAR SPACE 24" O.C.	VERY LOW
	ROSA SPECIES 'FLOWER CARPET PINK'	ROSE	2 GAL.	TRIANGULAR SPACE 36" O.C.	MED
	ROSMARINUS O. 'PROSTRATUS' 'HUNTINGTON CARPET'	ROSEMARY	1 GAL.	TRIANGULAR SPACE 36" O.C.	LOW
	SENECIO SERPENS	BLUE CHALKSTICKS	1 GAL.	TRIANGULAR SPACE 24" O.C.	LOW
	TRACHELOSPERMUM JASMINOIDES	STAR JASMINE	1 GAL.	TRIANGULAR SPACE 18" O.C.	MED
	GN-1 HYBRID BERMUDA SOD				

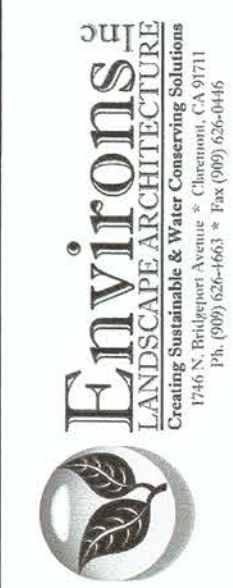
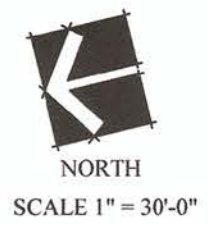
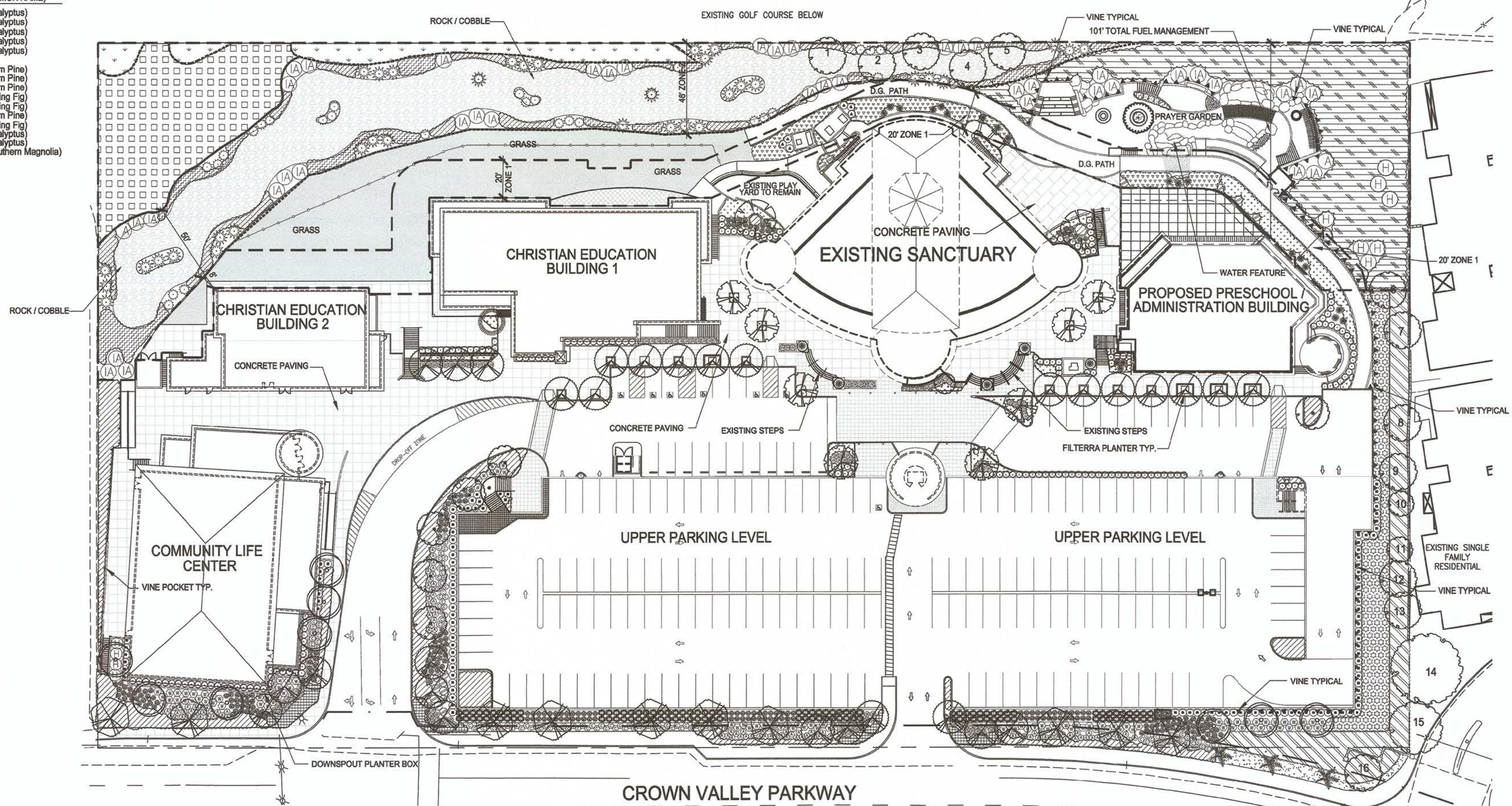
EXISTING LANDSCAPE	SYMBOL	DESCRIPTION
		EXISTING CHAPARRAL TO REMAIN
		COASTAL SAGE SCRUB / CHAPARRAL TO REMAIN
		EXISTING ORNAMENTAL LANDSCAPE TO REMAIN
		EXISTING FESCUE GRASS TO REMAIN

**SHREDDED MULCH NOTE**  
ALL PLANTER AREAS TO RECEIVE A 2" LAYER OF SHREDDED COVER MULCH AVAILABLE FROM EARTHWORKS (909) 270-0088

**EXISTING TREE LEGEND**

TREE NO.	BOTANICAL NAME (COMMON NAME)
1	Eucalyptus species (Eucalyptus)
2	Eucalyptus species (Eucalyptus)
3	Eucalyptus species (Eucalyptus)
4	Eucalyptus species (Eucalyptus)
5	Eucalyptus species (Eucalyptus)
6	Pinus species (Pine)
7	Podocarpus gracilior (Fern Pine)
8	Podocarpus gracilior (Fern Pine)
9	Podocarpus gracilior (Fern Pine)
10	Ficus benjamina (Weeping Fig)
11	Ficus benjamina (Weeping Fig)
12	Podocarpus gracilior (Fern Pine)
13	Ficus benjamina (Weeping Fig)
14	Eucalyptus species (Eucalyptus)
15	Eucalyptus species (Eucalyptus)
16	Magnolia grandiflora (Southern Magnolia)

NOTE: THE LANDSCAPE DESIGN WILL COMPLY WITH CHAPTER 9.55 OF THE ZONING ORDINANCE



PROJECT  
**South Shores Church**  
32712 Crown Valley Parkway,  
Dana Point, California

THOMAS G.  
**matlock ASSOCIATES INC**  
1614 E. HOLT BLVD., STE. 108  
ONTARIO, CALIFORNIA 91761  
909-863-7777

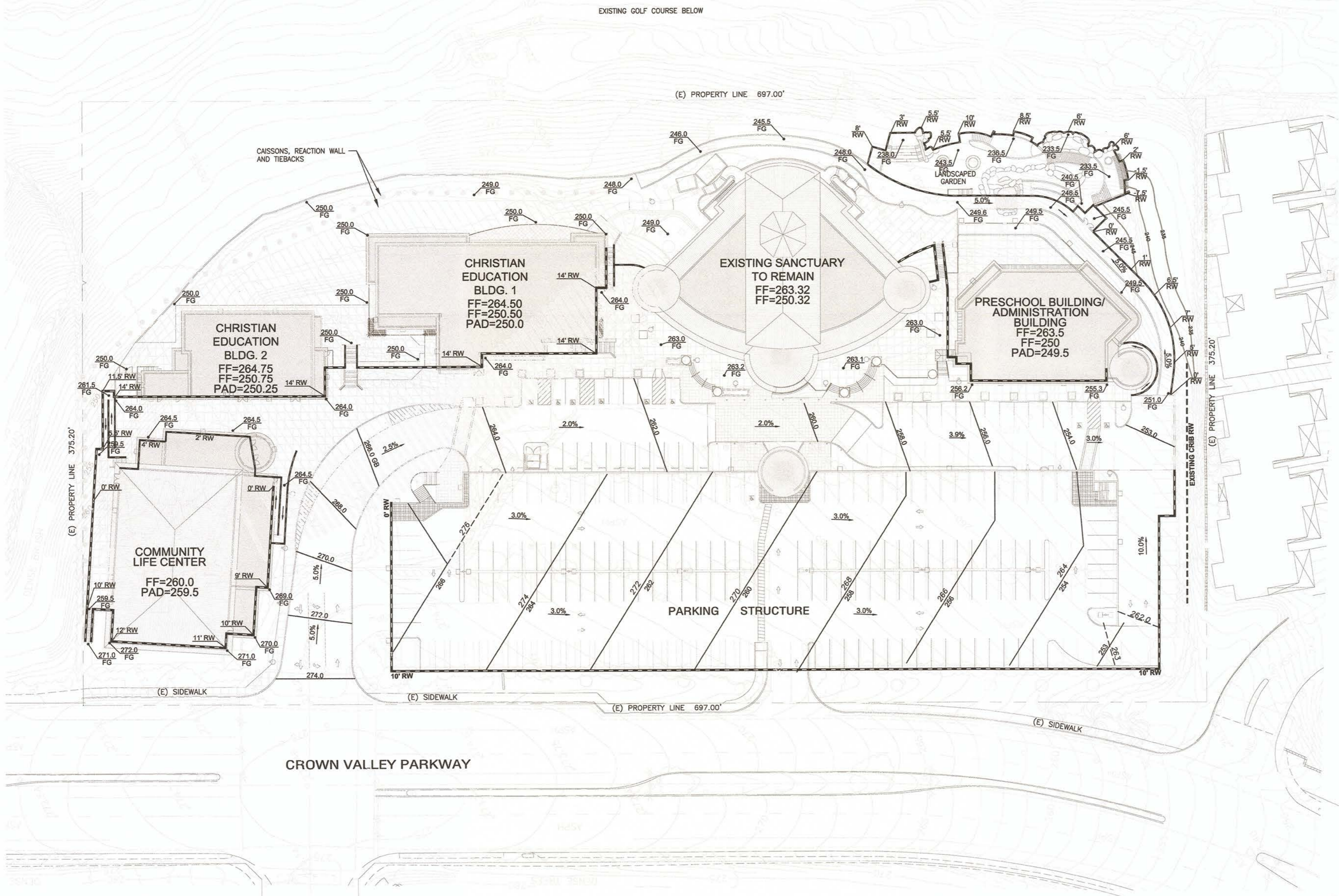
DATE	9-30-14
JOB NO.	MTLK0031
DRWN /CHK'D	

PRELIMINARY  
LANDSCAPE  
PLAN

SHT. TITLE

L-1

SHEET NO.



EXISTING GOLF COURSE BELOW

(E) PROPERTY LINE 697.00'

(E) PROPERTY LINE 375.20'

(E) PROPERTY LINE 375.20'

(E) PROPERTY LINE 697.00'

(E) SIDEWALK

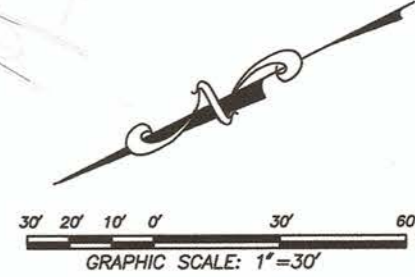
(E) SIDEWALK

(E) SIDEWALK

CROWN VALLEY PARKWAY

**LEGEND**

- RETAINING WALL
- CAISSON
- - - TIE-BACK
- FF FINISH FLOOR
- FG FINISH GRADE
- RW RETAINING WALL
- 260 CONTOUR ELEVATION
- 260 UPPER PARKING STRUCTURE CONTOUR ELEVATION



**ADAMS • STREETER**  
**CIVIL ENGINEERS, INC.**  
 Ph: 949 474-2550 Fax: 949 474-0251



REGISTERED PROFESSIONAL ENGINEER  
 NICHOLAS A. STREETER  
 No. 70862  
 Exp. 06/30/15  
 ARCH/ENG STAMP

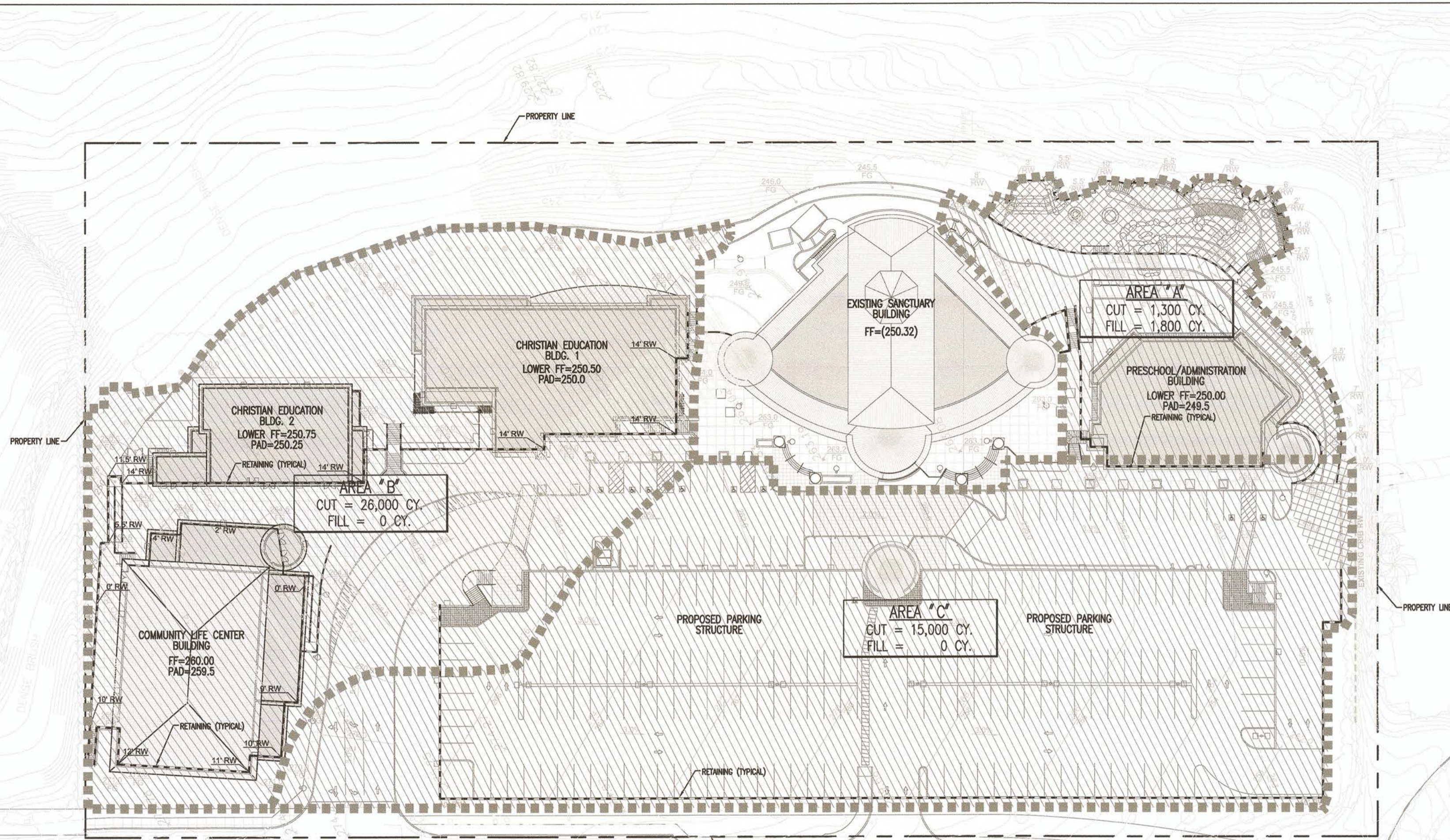
**ALTERNATIVE**  
 Conditional Use Permit Submittal for:  
**South Shores Church**  
 32712 Crown Valley Parkway  
 Dana Point, California 92629

JOB NO.	21235
DRWN/CHK'D	NS
DATE	ISSUE
▽ FEB.07.12	-
▲ AUG.16.12	-
▲ APR.15.13	-
▲ MAR.09.15	-

SHT. TITLE  
**CONCEPTUAL GRADING PLAN**

SHEET NO.

**C-1**



**EARTHWORK QUANTITIES**  
(DOES NOT INCLUDE SHRINKAGE, SUBSIDENCE, OR BULKING FACTORS)

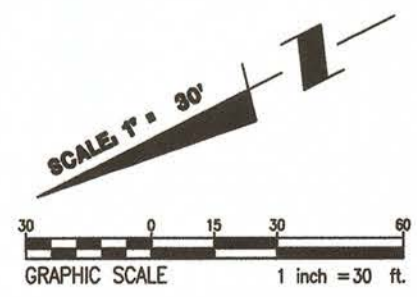
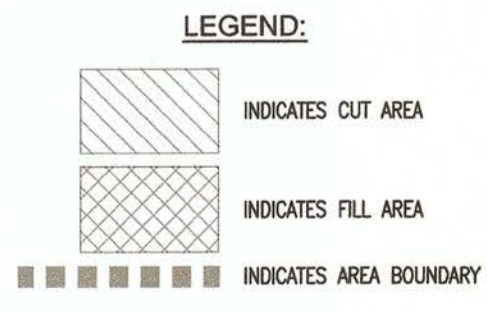
AREA "A"	
RAW CUT	1,300 C.Y.
RAW FILL	1,800 C.Y.
IMPORT	500 C.Y.
EXPORT	0 C.Y.
STOCKPILE	0 C.Y.

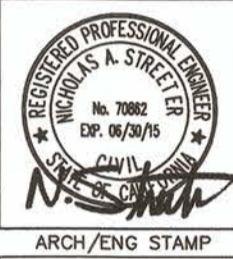
AREA "B"	
RAW CUT	26,000 C.Y.
RAW FILL	0 C.Y.
IMPORT	0 C.Y.
EXPORT	26,000 C.Y.
STOCKPILE	0 C.Y.

AREA "C"	
RAW CUT	15,000 C.Y.
RAW FILL	0 C.Y.
IMPORT	0 C.Y.
EXPORT	15,000 C.Y.
STOCKPILE	0 C.Y.



**ADAMS • STREETER**  
**CIVIL ENGINEERS, INC.**  
 18 Corporate Park, Irvine, CA 92618  
 Ph. 949 474-3330 Fax. 949 474-0381



ARCH/ENG STAMP

**ALTERNATIVE**  
 Conditional Use Permit Submittal for:  
**South Shores Church**  
 32712 Crown Valley Parkway  
 Dana Point, California 92629

JOB NO.  
21235

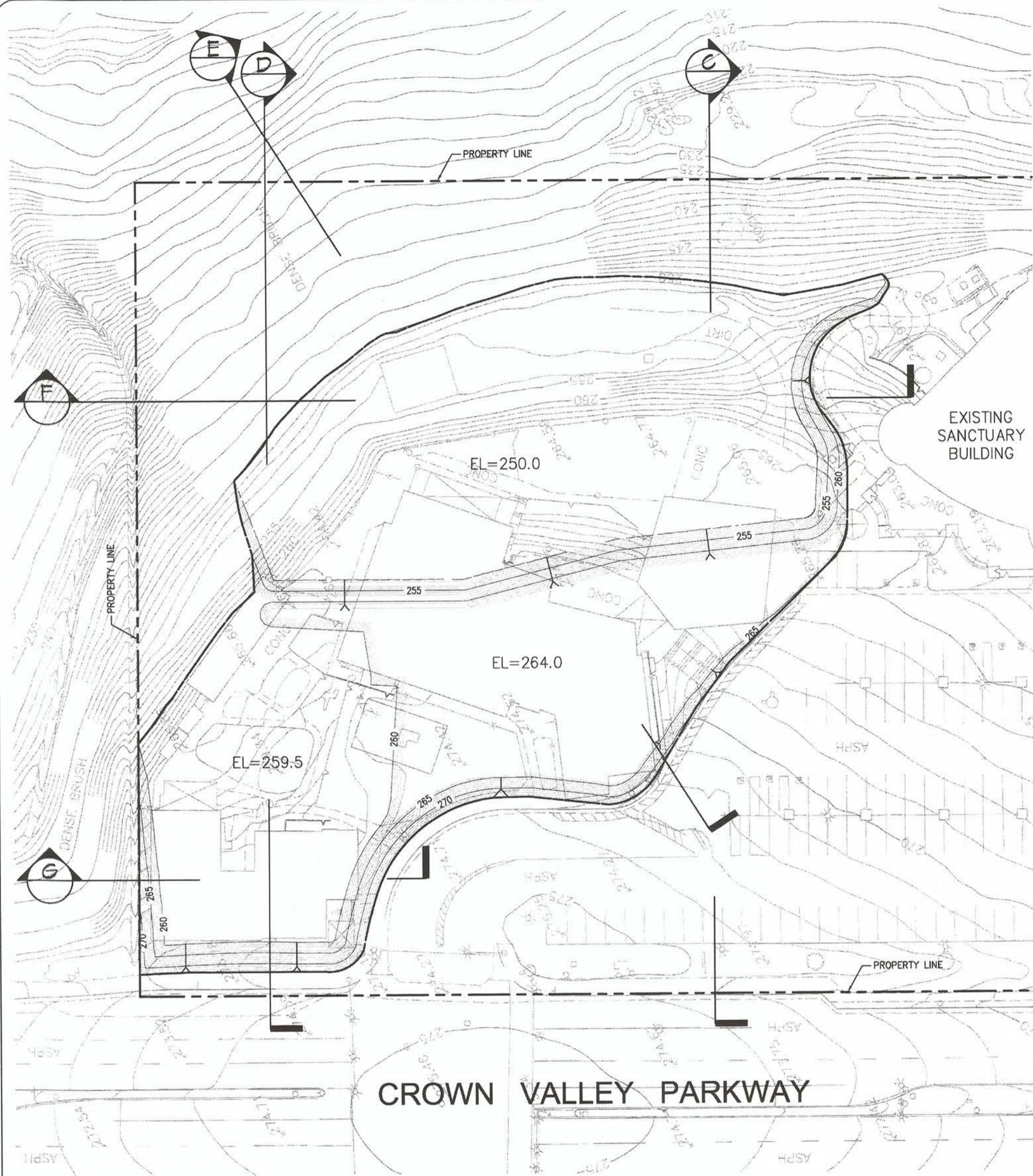
DRWN/CHK'D  
NS

DATE	ISSUE
✓ FEB.07.12	-
▲ AUG.16.12	-
▲ APR.15.13	-
▲ MAR.09.15	-

SHT. TITLE  
**CORRECTIVE GRADING EXHIBIT ROUGH GRADE EARTHWORK QUANTITIES**

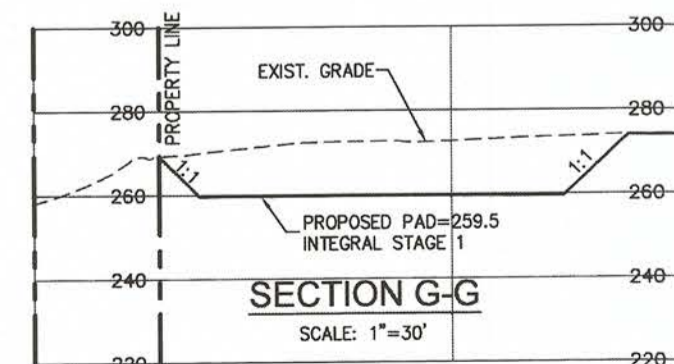
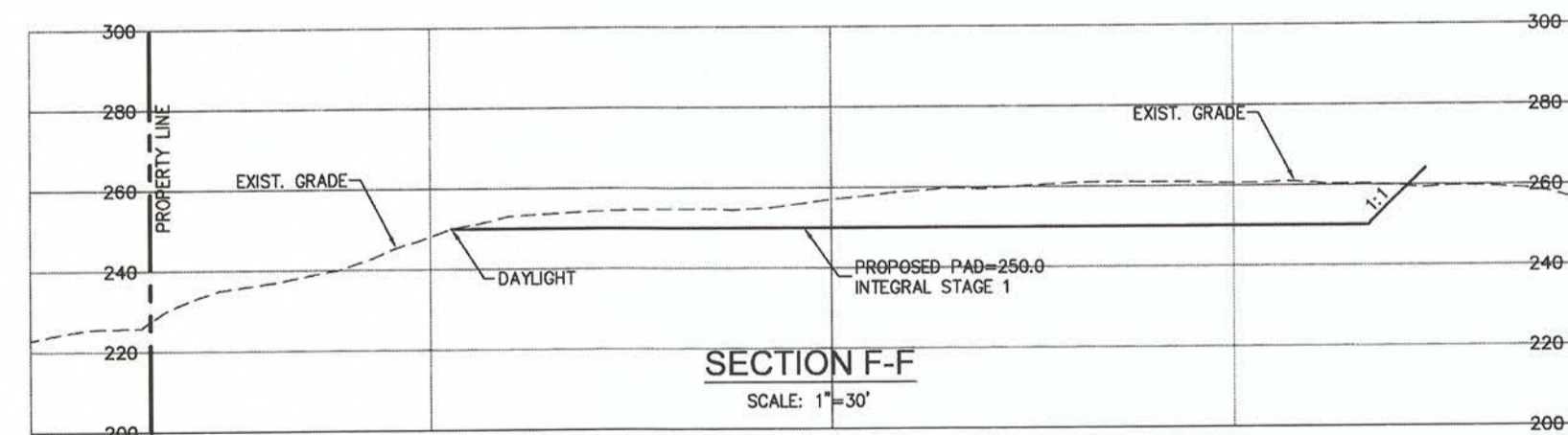
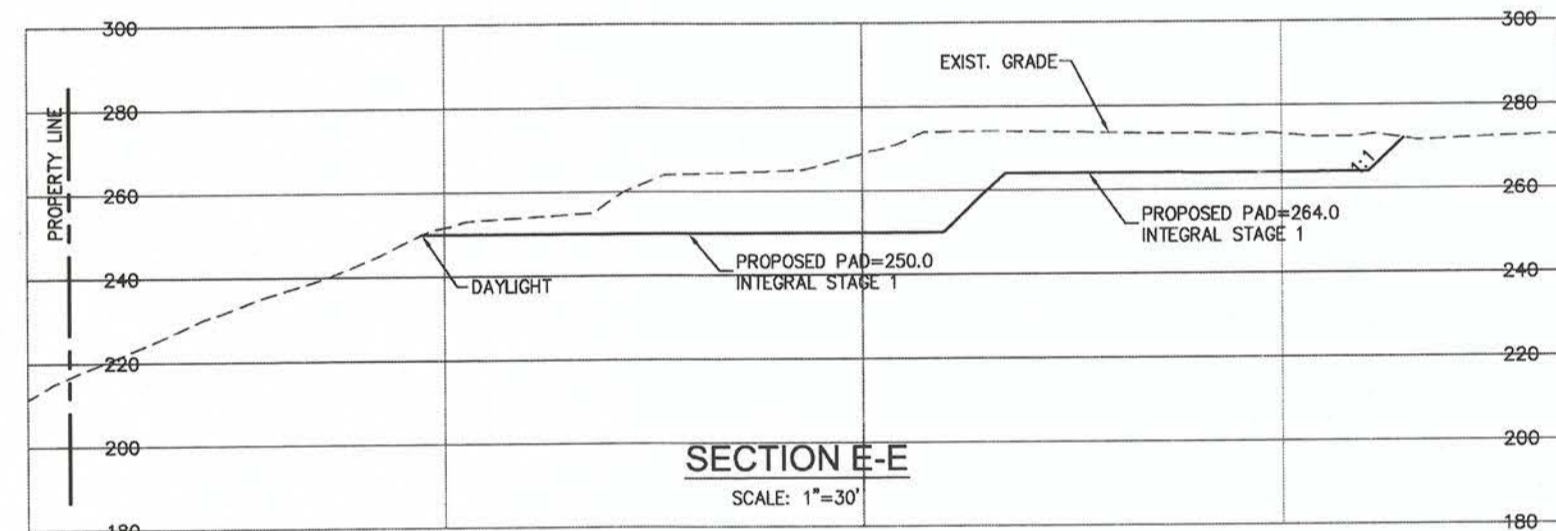
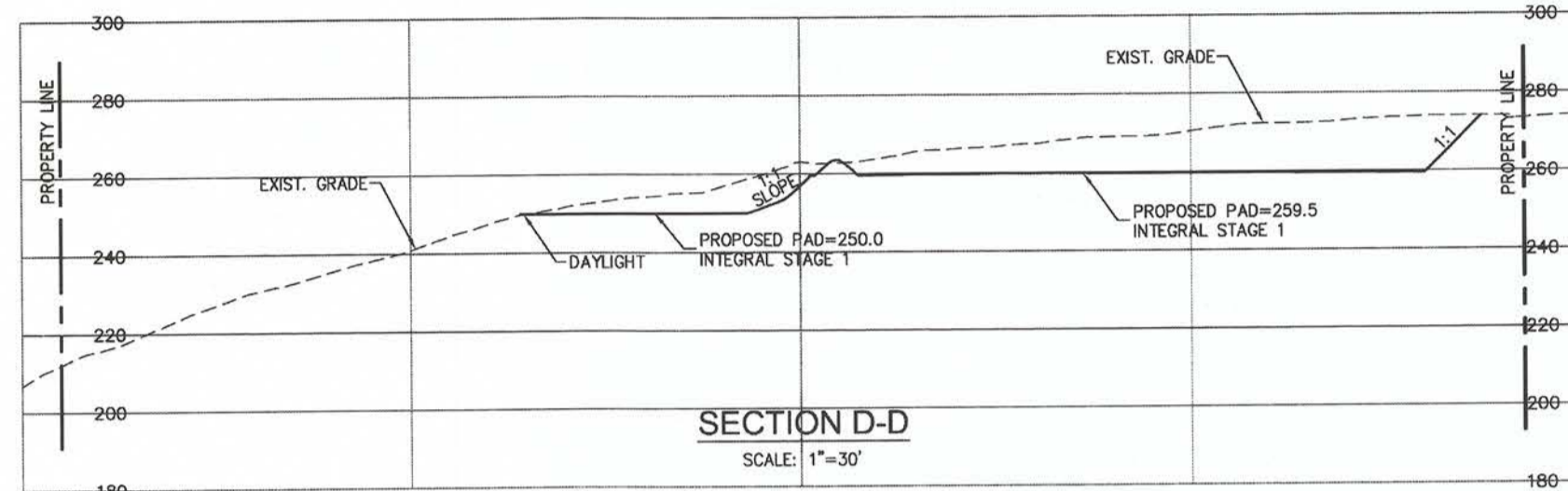
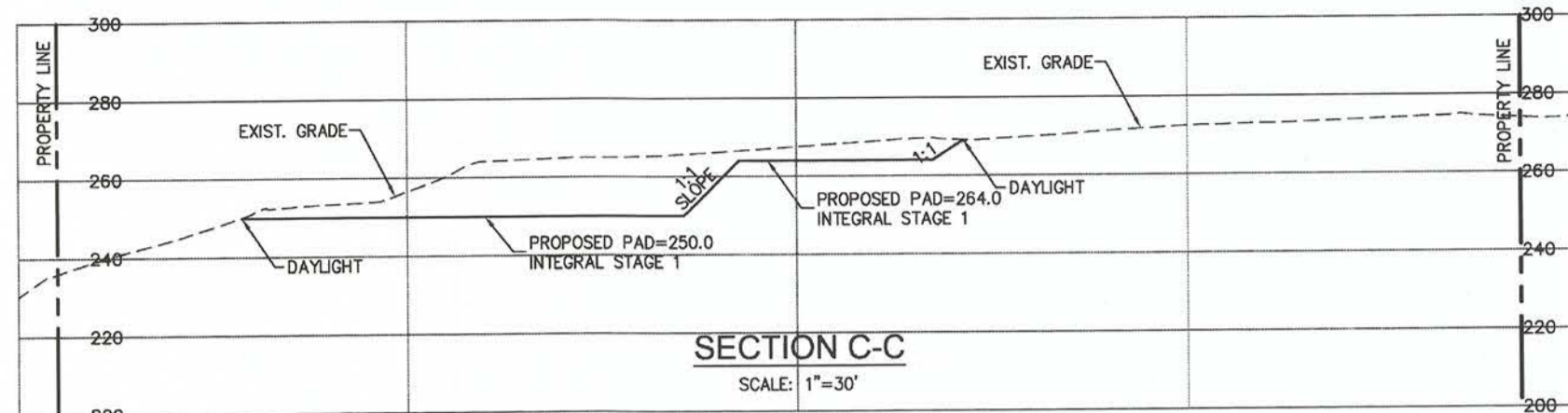
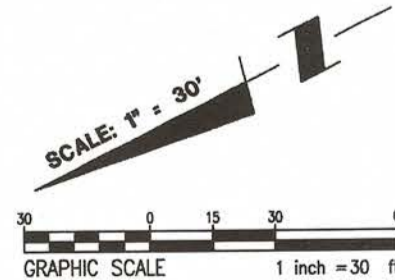
SHEET NO.

**C-2.0**

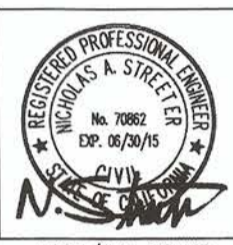


INTEGRAL GRADING EARTHWORK QUANTITIES	
* RAW CUT :	23,000 C.Y.
* RAW FILL :	0 C.Y.
EXPORT 23,000 C.Y. STOCKPILE 0 C.Y.	

\* QUANTITIES SHOWN HEREON ARE PART OF THE TOTAL QUANTITIES SUMMARY ON SHEET C-2.0.



**ADAMS • STREETER**  
**CIVIL ENGINEERS, INC.**  
 15 Corporate Park, Irvine, CA 92608  
 PH: 949 474-2330 Fax: 949 474-0251



ARCH/ENG STAMP

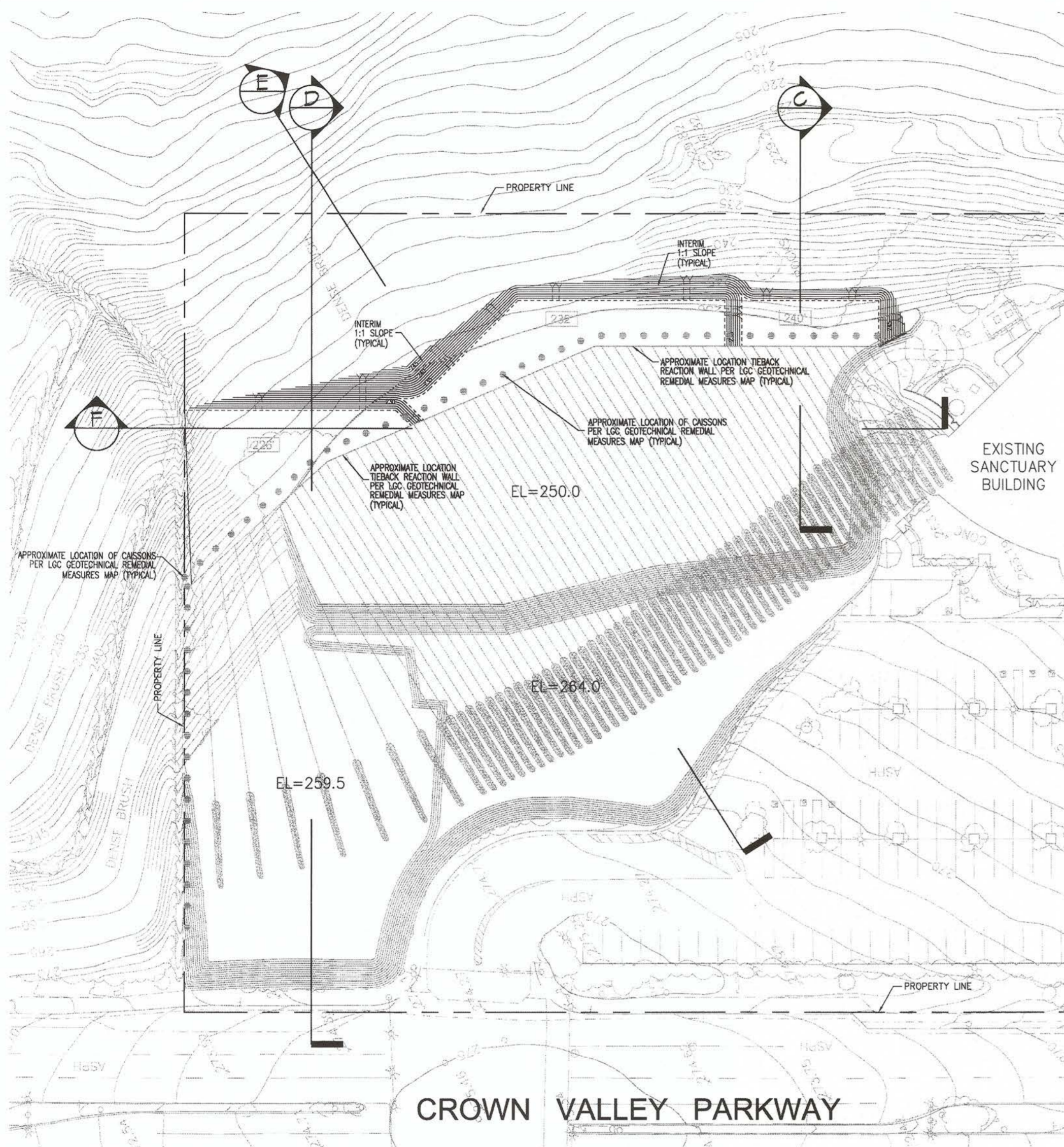
**ALTERNATIVE**  
 Conditional Use Permit Submittal for:  
**South Shores Church**  
 32712 Crown Valley Parkway  
 Dana Point, California 92629

JOB NO.	21235
DRWN/CHK'D	NS
DATE	ISSUE
▲ FEB.07.12	-
▲ AUG.16.12	-
▲ APR.15.13	-
▲ MAR.09.15	-

SHT. TITLE  
**CORRECTIVE  
 GRADING EXHIBIT  
 STAGE 1  
 INTEGRAL GRADING**

SHEET NO.

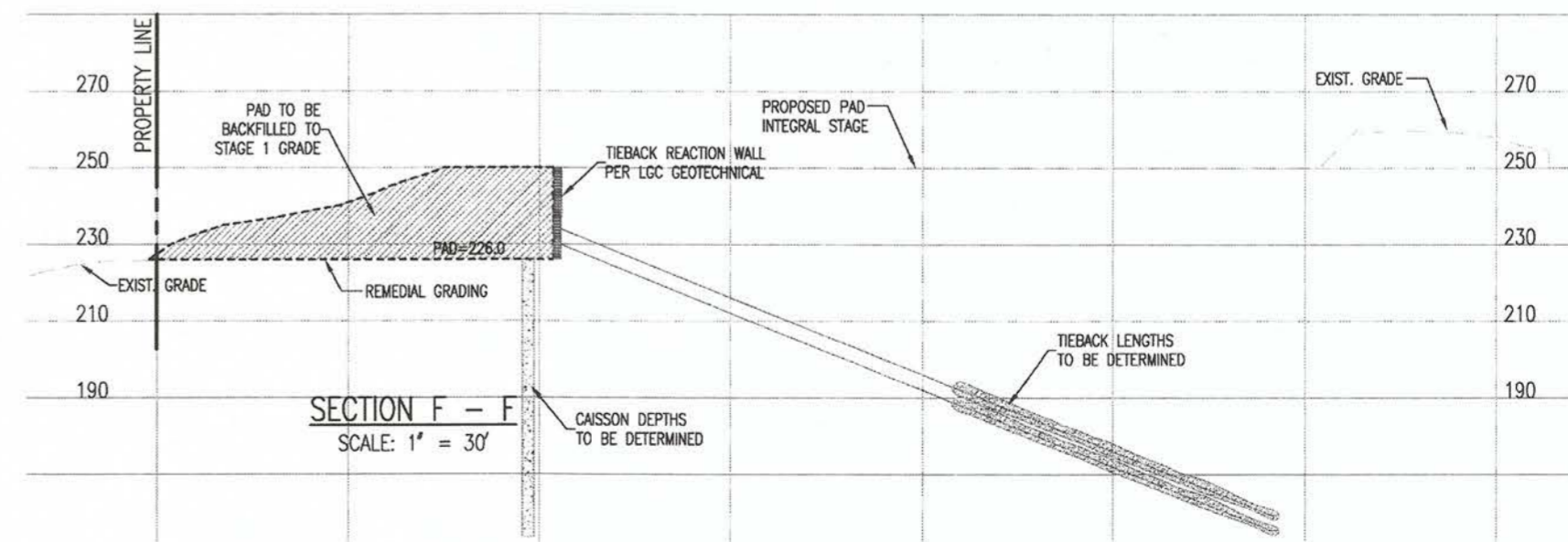
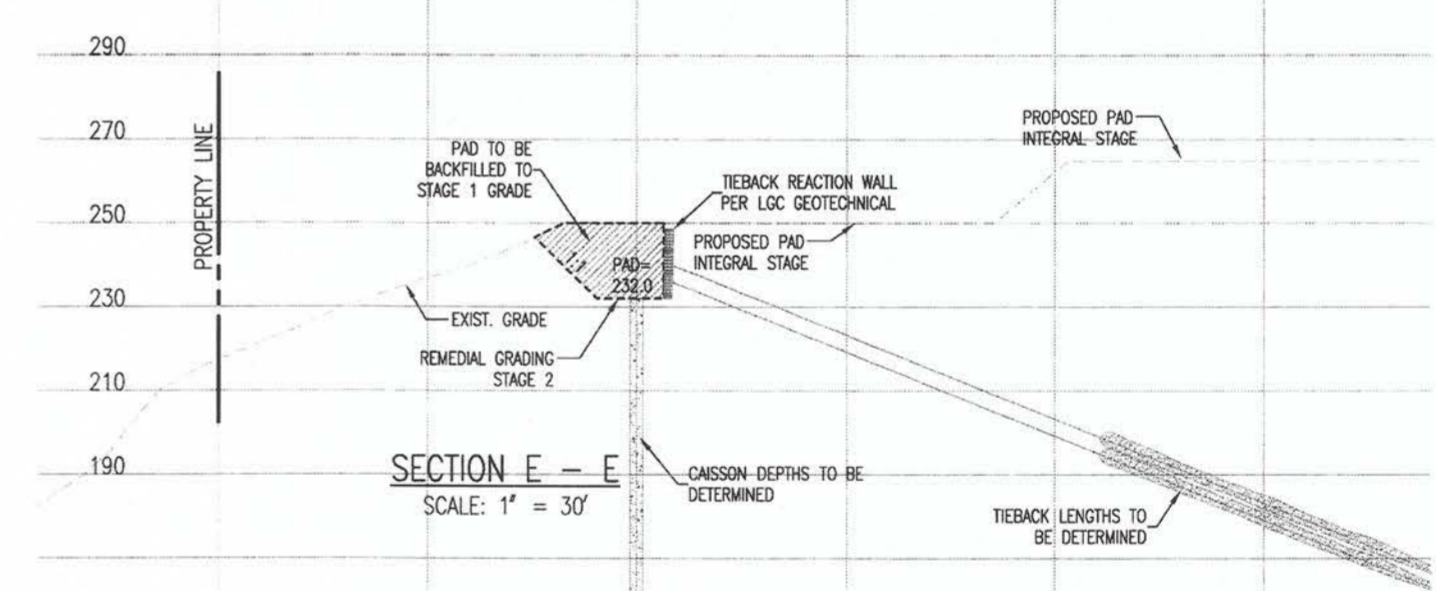
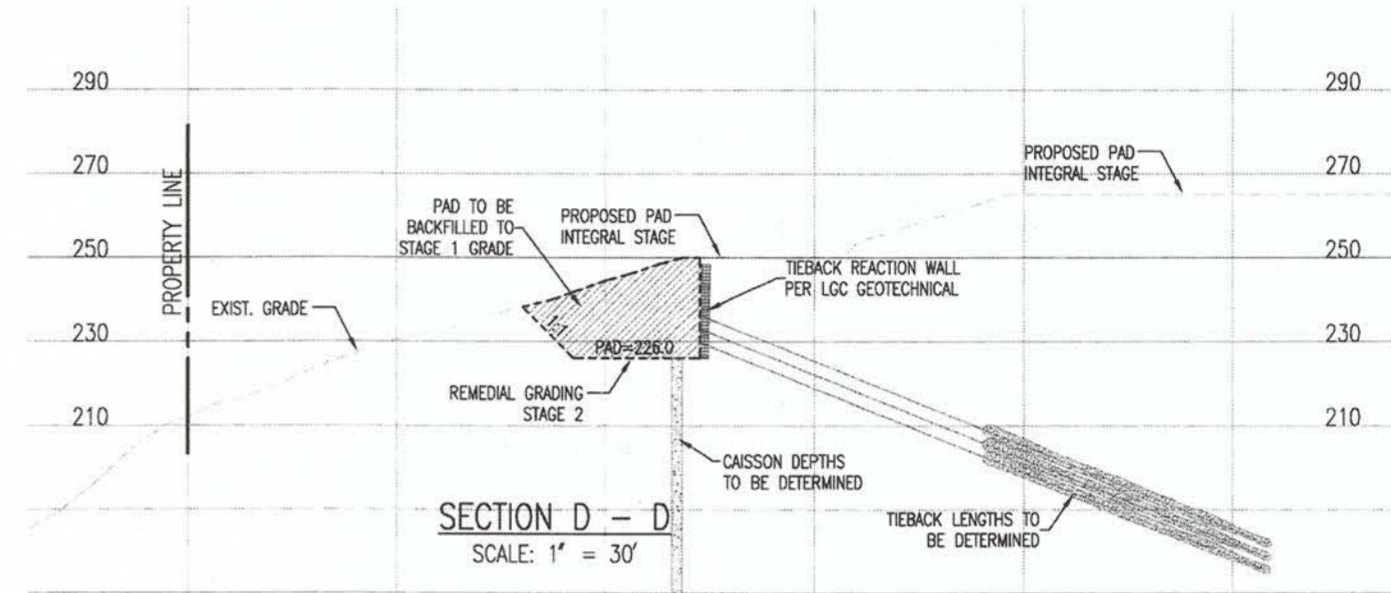
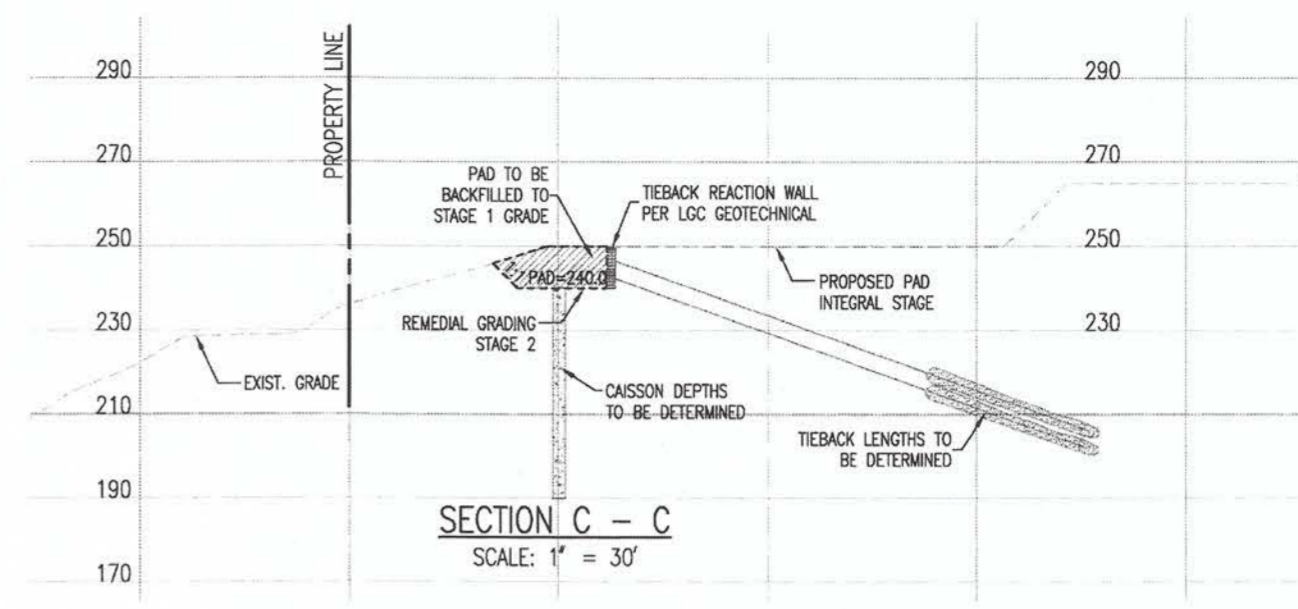
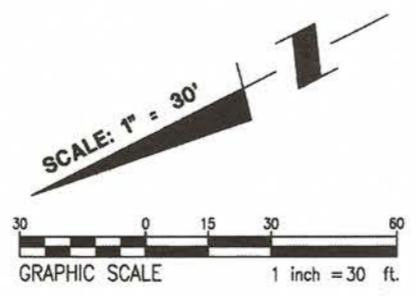
**C-2.1**



CROWN VALLEY PARKWAY

REMEDIAL STAGE EARTHWORK QUANTITIES	
* RAW CUT :	3,700 C.Y.
* RAW FILL :	3,700 C.Y.
EXPORT	0 C.Y.
STOCKPILE	0 C.Y.

\* QUANTITIES SHOWN HEREON ARE PART OF THE TOTAL QUANTITIES SUMMARY ON SHEET C-2.0.



ADAMS • STREETER  
CIVIL ENGINEERS, INC.  
16 Corporate Park, Irvine, CA 92608  
PH: 949 474-2330 Fax: 949 474-0251



ARCH/ENG STAMP

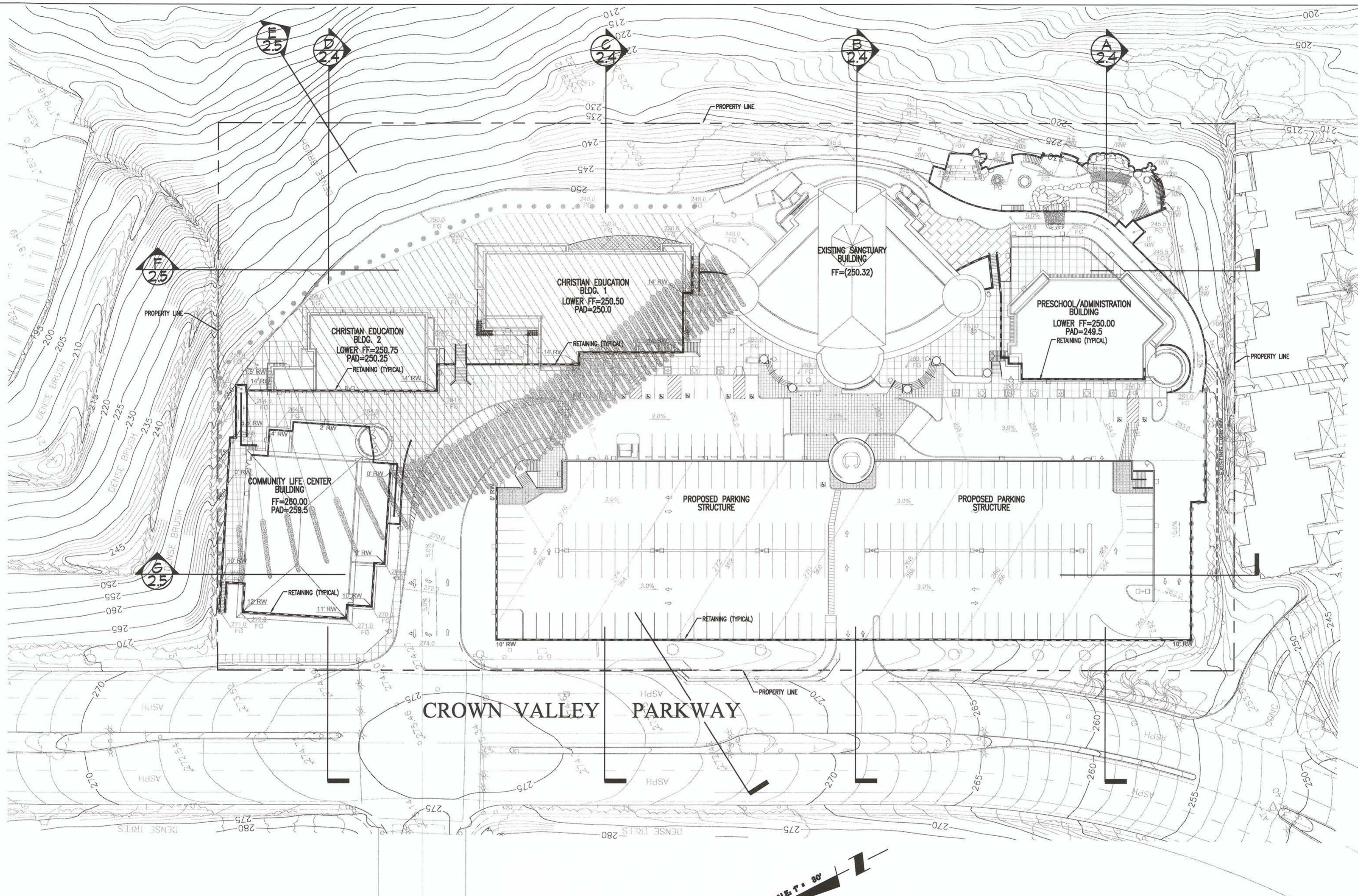
ALTERNATIVE  
Conditional Use Permit Submittal for:  
**South Shores Church**  
32712 Crown Valley Parkway  
Dana Point, California 92629

JOB NO.	21235
DRWN/CHK'D	NS
DATE	ISSUE
✓ FEB.07.12	
▲ AUG.16.12	
▲ APR.15.13	
▲ MAR.09.15	

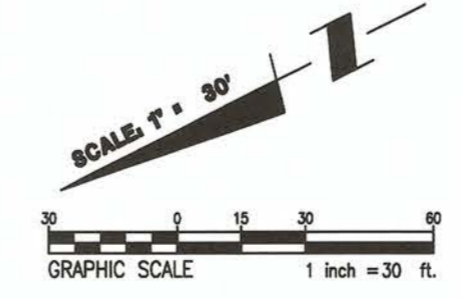
SHT. TITLE  
CORRECTIVE  
GRADING EXHIBIT  
STAGE 2  
REMEDIAL GRADING

SHEET NO.

**C-2.2**



**LEGEND:**  
 - - - - - INDICATES RETAINING WALL/STRUCTURE



**ADAMS • STREETEER**  
 CIVIL ENGINEERS, INC.  
 1400 S. GARDEN ST., SUITE 200  
 DANA POINT, CA 92629  
 PH: 949 474-2530 FAX: 949 474-0261

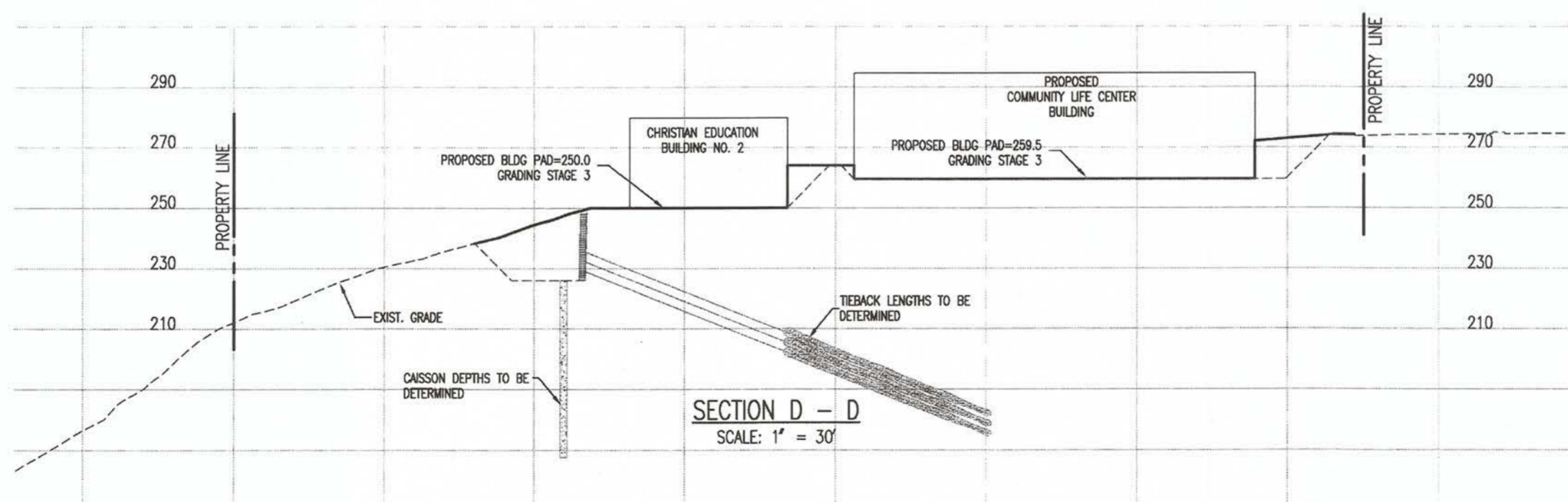
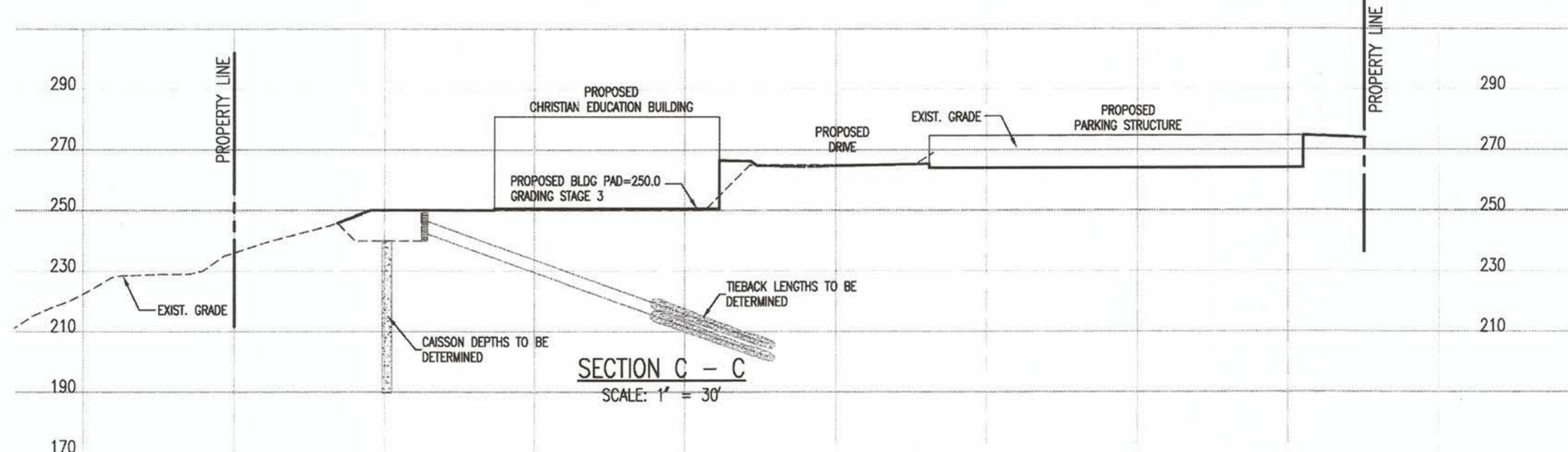
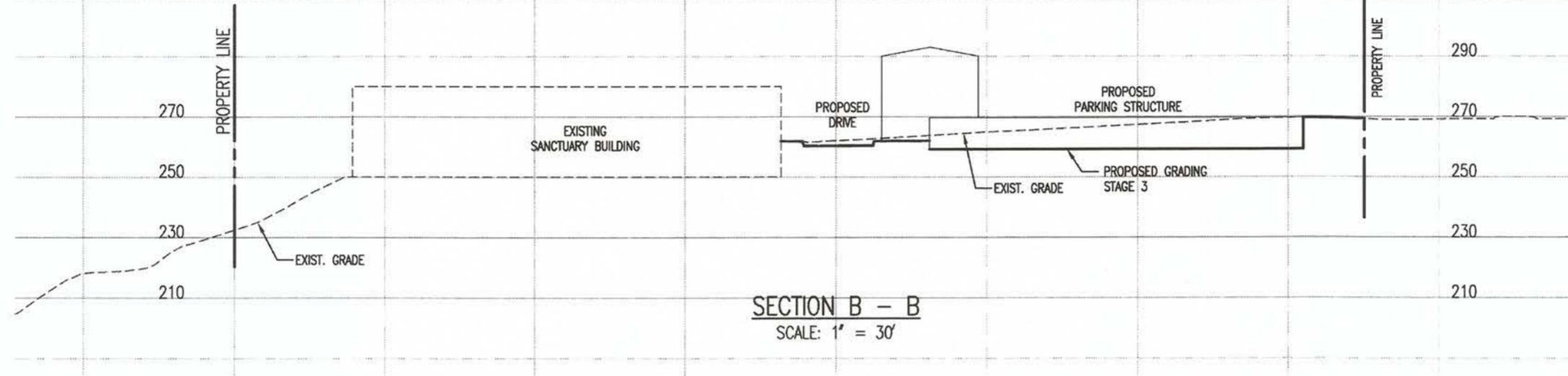
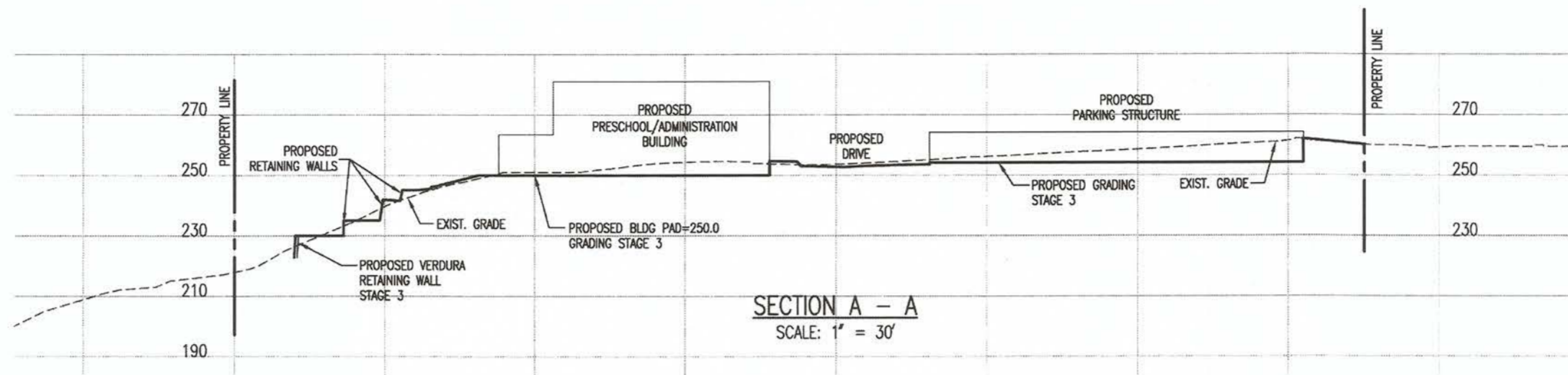


**ALTERNATIVE**  
 Conditional Use Permit Submittal for:  
**South Shores Church**  
 32712 Crown Valley Parkway  
 Dana Point, California 92629

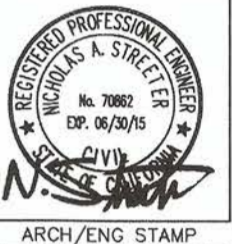
JOB NO. 21235	
DRWN/CHK'D NS	
DATE	ISSUE
▽ FEB.07.12	-
△ AUG.16.12	-
△ APR.15.13	-
△ DEC.02.13	-
MAR.09.15	-

SHT. TITLE  
**CORRECTIVE GRADING EXHIBIT**  
 STAGE 3 (FINAL)  
 ROUGH GRADING

SHEET NO.  
**C-2.3**



ADAMS • STREETER  
CIVIL ENGINEERS, INC.  
PH: 949 474-2330 FAX: 949 474-0281



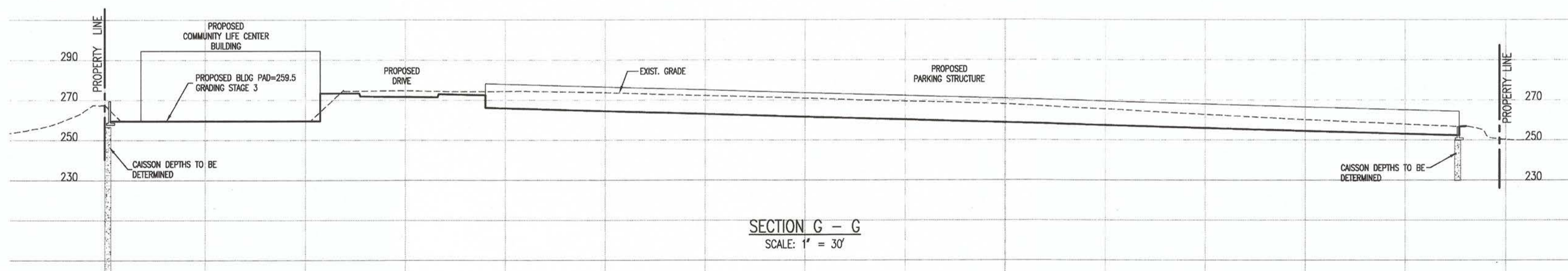
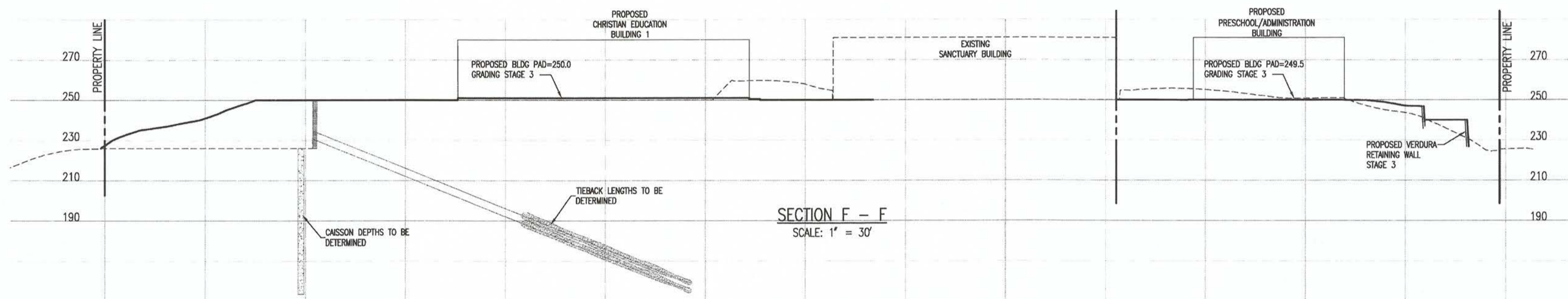
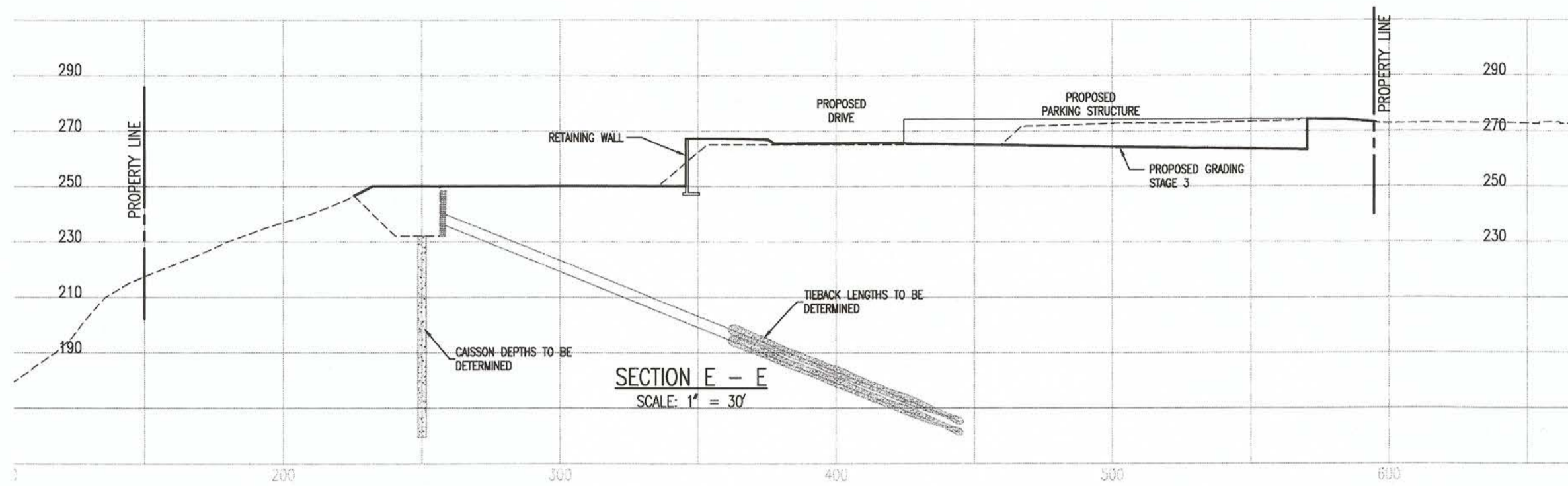
ARCH/ENG STAMP

ALTERNATIVE  
Conditional Use Permit Submittal for:  
**South Shores Church**  
32712 Crown Valley Parkway  
Dana Point, California 92629

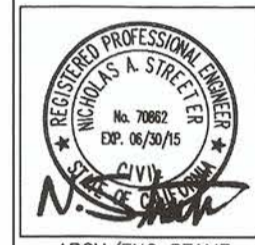
JOB NO.	21235
DRWN/CHK'D	NS
DATE	ISSUE
▽ FEB.07.12	-
▲ AUG.16.12	-
▲ APR.15.13	-
▲ MAR.09.15	-

SHT. TITLE  
**CORRECTIVE GRADING EXHIBIT**  
STAGE 3  
ROUGH GRADE SECTIONS

SHEET NO.  
**C-2.4**



ADAMS • STREETER  
CIVIL ENGINEERS, INC.  
12 Corporate Park, Irvine, CA 92606  
Ph: 949 474-2300 Fax: 949 474-0251



ARCH/ENG STAMP

**ALTERNATIVE**  
Conditional Use Permit Submittal for:  
**South Shores Church**  
32712 Crown Valley Parkway  
Dana Point, California 92629

JOB NO. 21235	
DRWN/CHK'D NS	
DATE	ISSUE
▽ FEB.07.12	-
△ AUG.16.12	-
△ APR.15.13	-
△ MAR.09.15	-

SHT. TITLE  
**CORRECTIVE GRADING EXHIBIT**  
STAGE 3  
ROUGH GRADE SECTIONS

SHEET NO.  
**C-2.5**