

**PARKING
OPPORTUNITIES**

LANTERN DISTRICT

BETTER SIGNAGE TO DIRECT
PEOPLE TO CITY LEASED LOTS +
OFFICE HOURS

COMMUNICATE TO PROP. OWNERS THAT
THEY CAN MONETIZE THEIR PARKING SPACES
AND NOT OPEN (IE SPECIAL EVENTS) TO IN-
CREASE PARKING SUPPLY DURING PEAK HRS.

Have city staff
do research on parking
structure economics

NOW!!

Parking
Please!

- +CE
- E
- N
- A
- S
- U
- L
- L
- N
- P
- C
- P
- U
- S
- P
- M
- S
- B
- T
- W

PARKING CONCERNS

LANTERN DISTRICT

- SUFFICIENT PARKING WITHIN THE COMMERCIAL DISTRICT FOR COMMERCIAL CUSTOMERS, DO NOT USE RESIDENTIAL AREAS
- (EXAMPLE) QUESTION: HOW MUCH PARKING DOES SANDRO'S HAVE FOR 8-10 EMPLOYEES ON SHIFT PLUS THE 30 CUSTOMERS THERE AT ANY GIVEN TIME?

Put Parking in the Lantern District so employees + customers **DO NOT** park in the residential

EMPLOYEE PARKING SAFETY

- LOOK AT PARKING RATES THAT ACCOUNT FOR MORE EMPLOYEE PARKING! ESPECIALLY RESTAURANTS
- SHARED PARKING OPPORTUNITIES ~~IN~~ IN PROXIMITY TO RESTAURANTS W/ DIFFERENT PEAK DEMAND TIME.
- EXPLORE USE OF POST OFFICE PARKING LOT AS A CENTRAL / CORE SPOT FOR EVERYTHING WEST OF GOLDEN LANTERN TO BLUE LANTERN. KEEP PARKING CORE BETWEEN PCH AND DEL PRADO.

Don't want to park in residential areas

Restaurants, bars, etc. need more parking spots

Explore shared parking opportunities

Post office parking lot as a central spot

WANT PKG. METERS
RESIDENT "PASSES"

WANT BUSINESS WORKERS
PARKING ON RESIDENTIAL
STREETS

FREE PKG GARAGES
3 HR FREE PKG
VALIDATION BY
BUSINESSES FOR ADD'L

REQUIRED
RETAIL & BUSINESS

PROBLEM:
COMMERCIAL PARKING
DESTROYS RESIDENTIAL
QUALITY OF LIFE AT
NIGHT.

PROBLEM: NIGHT TIME USERS
WILL NOT WALK FAR
& THERE IS NOT ADEQUATE
PARKING WHERE IT IS NEEDED
IN COMMERCIAL AREAS.

PUBLIC LOTS ARE REQ'D.

Complete Streets
More Bikes and
Walking Routes.
Make Dana Point
Unique.

PROBLEM:
EVENTS ON DE
PRADO MEANS
PUBLIC PARKING
PARKING

Golden Lantern
after 9:00 PM
(10:00^{PM} at latest)

disruptive to
students.

water customers
(sometimes drunk / loud)
to cars -

hand by our houses.

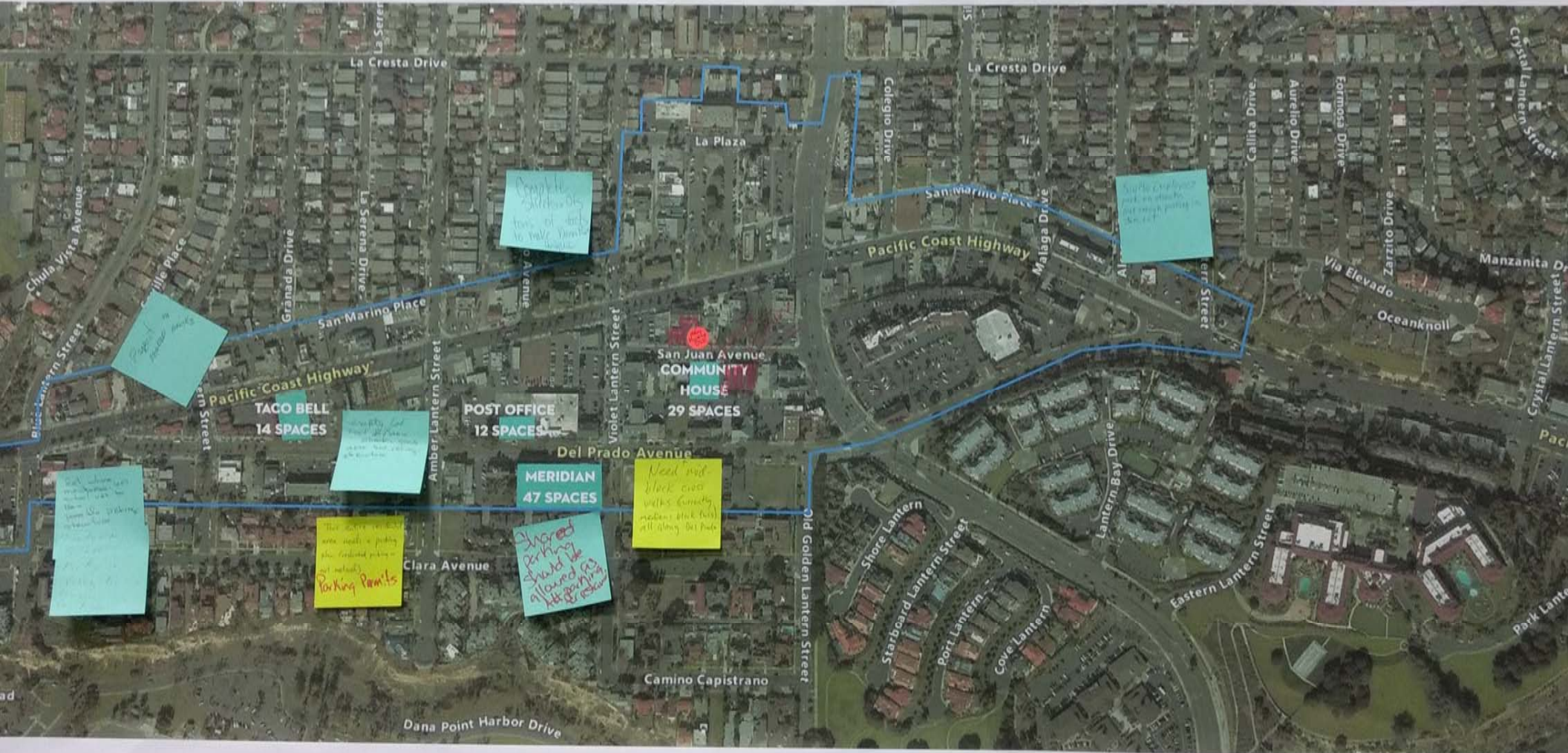
Parking should
by 9:00 or 10:00 PM

we can sleep.
until midnight or
is too disruptive!

More SUBSTANTIAL PARKING
ON STRUCTURE

NO PARKING
PARKS

LANTERN DISTRICT TOWN CENTER



empty lot
next to RADIO
Shack - good
SA for parking
structure

POST OFFICE
12 SPACES

Amber Lanter

Violet La

29 S

Del Prado Avenue

MERIDIAN
47 SPACES

Need ↑
block cross
walks (curre
medians block
all along Del

fire residential
needs a parking
restricted parking -

Permits

Clara Avenue

Shared
parking
should be
allowed as
at parking
& reserve

Complete Streets. org
tons of facts
to make Dam Run
unique

o Avenue

Violet Lantern Street

Play
Packed
Diverse
Space

San Juan Avenue
**COMMUNITY
HOUSE**

POST OFFICE
12 SPACES

29 SPACES

La Plaza



Bev Mo Employees
park on streets.
Not enough parking in
store lot.

Place

Highway

Malaga Drive

AI

Terr Street

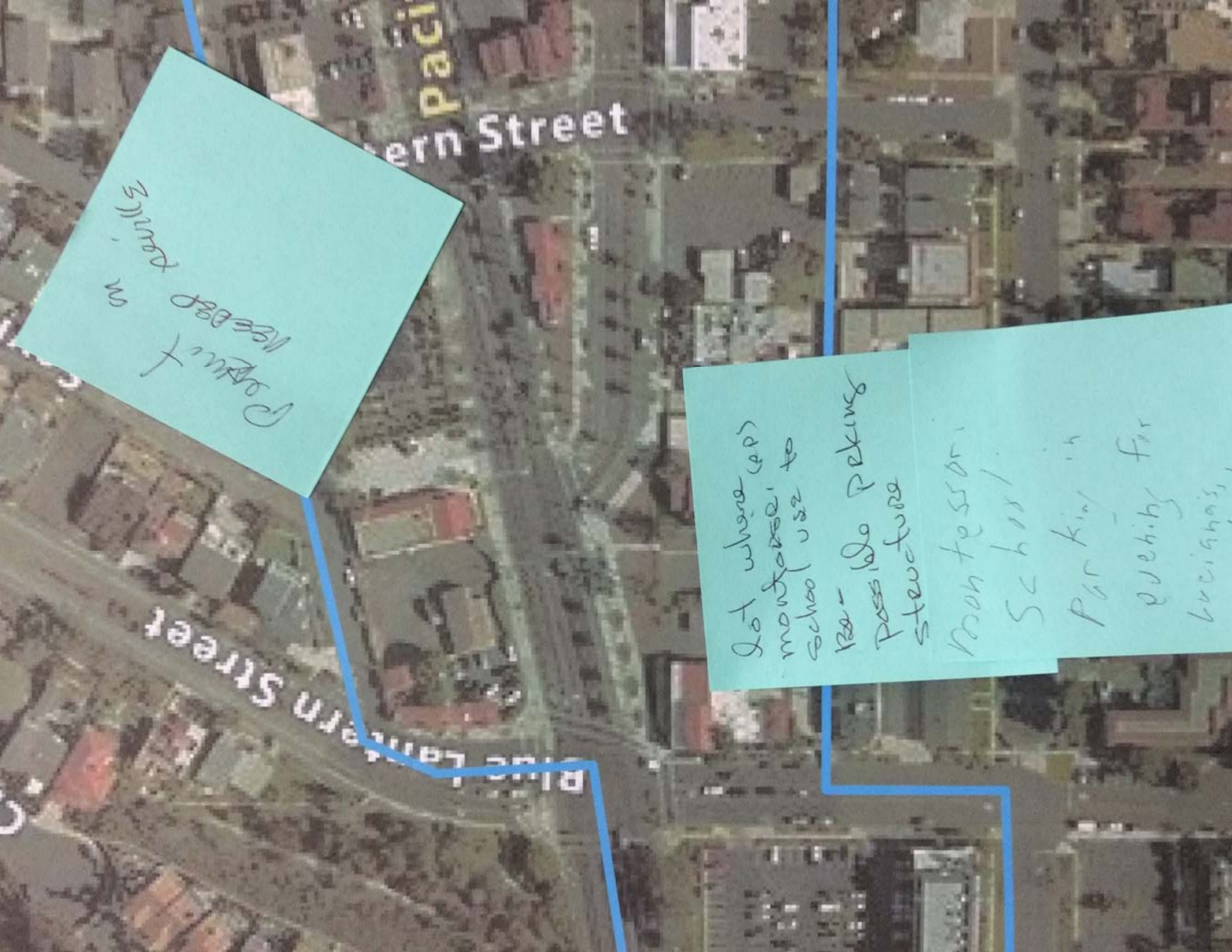
Callita Drive

Aurelio Drive

Streets are too
Narrow in front of

Taco Bell. Very ~~diff~~
difficult to travel
on that location

when there is a
truck or SUV in the
next lane. Consider this
Please consider improving
when improving Dehert
on Park



Paci...
ern Street

Point in
Need on
Hill

Blue Lantern Street

Lot where (ep)
monitor school use to

Paci - Do Peking
structure

Room teacher,
School,
Parking in
evening for
beginning,

Problem: Commercial Parking
Destroys Residential Quality
of Life at night.

Problem: Night time uses
will not walk far +
there is not adequate parking
where it is needed in
commercial areas.

Public Lots
are req'd.

~~Intersect~~
Definitely
not subsidized
by City for
free

Parking structure

Agree

Stuft Pizza

tern St

Sa

ve ↔

↔

PARKING structure?
How
call the owner

Shuttle works but
too long a route
Same # of shuttles on
different but shorter route
Perkins at Selma + Miami
Need to emphasize
WALKABILITY

en Lantern

Gold

Western

tern

am

DICT TOWN

Less Cars!
Visit
Complete
Streets. OK

Agree -
↓ Fewer empty lots

Parking
Structure



1

Del Prado

YES!!
Need a parking
structure when
Raintree is built
out.

yes

With all these
"parking structure"
comments, I worry
we're going to
become the Lantern
Parking District

We're already
below our
parking capacity,
so management seems
the better option
for our built
and our environment.
And our finances.

CENTER REQUIREMENTS
MORE RESTRICTIVE THAN
DE PARKING STANDARDS:

CREDIT FOR BICYCLE PARKING

EQUATED PARKING BETWEEN
RESIDENTIAL AND
NON-RESIDENTIAL USES

Agree

change these

Why no credit
for bike parking.
We need to encourage
more bike use
throughout our city

- have OCTA offer
more bus rides on P
LATE at night
- create bike rental
- make bike lanes
bikes on PCH front
North is super dangerous
- offer more walking
- more trails
- less cars make

- NEEDS / RAIN TREE
- DIFF TO RESEARCH VACANT LOTS.

- ALWAYS WALKABLE
- STEPPING OF STRUCTURES
- UNION BANK 39/39

- LOT CLOSE TO PUBLIC TRANSPORTATION / TROWLEY
- LOSS OF SPACES ON PCH
- NOT USER FRIENDLY - PCH

- PARKING GARAGE

- CAN'T WAIVE FEES FOR DEVELOPERS

- POST OFFICE SITE POSSIBLE GARAGE

- UNDER PARKED @ RAIN TREE

- SHARED PARKING COHABITATE

- PAYING MAY DETER TRAFFIC IN DT

- MAKE PAID PARKING ATTRACTIVE

- STRATEGIC PLACEMENT OF STRUCTURE POST OFFICE?

- PROFESSIONALS DETERMINE NECESSARY SERVICES.

- TANGIBLE WAYS TO DIRECT PEDESTRIAN CIRCULATION

- WALKABILITY OF STREETS & ALLEYS

- PARKING STRUCTURE SITES: BATES, OLD GOLDEN & PCH

- ADDED 30 STALLS PARKING GARAGE

- RESIDENT PARKING PASSES FOR STRUCTURES / METERS

- HANDICAP

- SJC PROJECT DOWNTOWN THEATER

- TOHENY

- ZONING CODE STANDARDS CREATED BUILT ENV.
TOWN CENTER.

- LUXE - GOOD EXAMPLE

- ANGLE PARKING 45° AS OPTION.

- OTHER MOBILITY OPTIONS TO PT FROM HOME