

# SOUTH OF STONEHILL DRIVE

Handwritten notes on a pink sticky note, partially obscured and difficult to read.



Handwritten notes on a light blue sticky note, including the word "Parker" and some illegible text.

Handwritten notes on an orange sticky note, including the number "10" and some illegible text.

Handwritten notes on two orange sticky notes, mostly illegible.

Small orange dot marker on the left edge of the map.

Small orange dot marker on the map.

Small orange dot marker on the map.

Small orange dot marker on the map.

Small orange dot marker on the map.

Small orange dot marker on the map.

Small orange dot marker on the map.

Small orange dot marker on the map.

Small orange dot marker on the map.

Small orange dot marker on the map.

Small orange dot marker on the map.

Small orange dot marker on the map.

Small orange dot marker on the map.

Small orange dot marker on the map.

Small orange dot marker on the map.

Small orange dot marker on the map.

Small orange dot marker on the map.

Small orange dot marker on the map.

Small orange dot marker on the map.

Small orange dot marker on the map.

Small orange dot marker on the map.

Small orange dot marker on the map.

Small orange dot marker on the map.

Small orange dot marker on the map.

Small orange dot marker on the map.

Small orange dot marker on the map.

Small orange dot marker on the map.

Small orange dot marker on the map.

Small orange dot marker on the map.

Small orange dot marker on the map.

Small orange dot marker on the map.

Small orange dot marker on the map.

Small orange dot marker on the map.

Small orange dot marker on the map.

Small orange dot marker on the map.

Small orange dot marker on the map.

Small orange dot marker on the map.

Small orange dot marker on the map.

Small orange dot marker on the map.

Small orange dot marker on the map.

Small orange dot marker on the map.

Small orange dot marker on the map.

Small orange dot marker on the map.

# SOUTH OF STONEHILL DRIVE



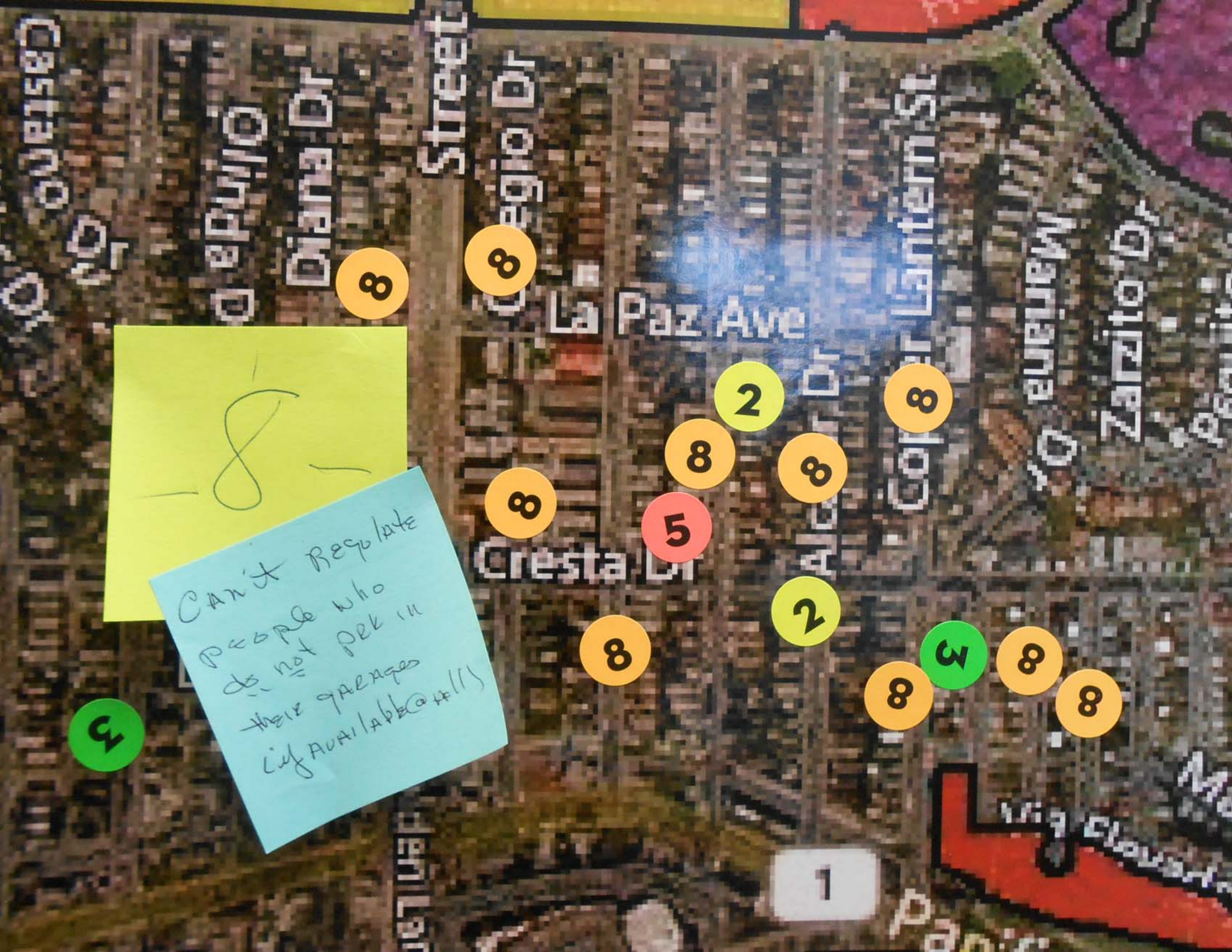
Survey real D.P  
neighborhoods to  
measure # of parking  
spaces used

- in garage

- on street

Compare with sq. ft  
of residences in the  
block

Beek Hill



Castano Dr

Diana Dr

Regio Dr

La Paz Ave

Cresta Dr

Copier Lanternist

Mariana Dr

Zarito Dr

Street

Street

Street

Street

Street

Street

3

8

8

8

5

8

8

2

8

2

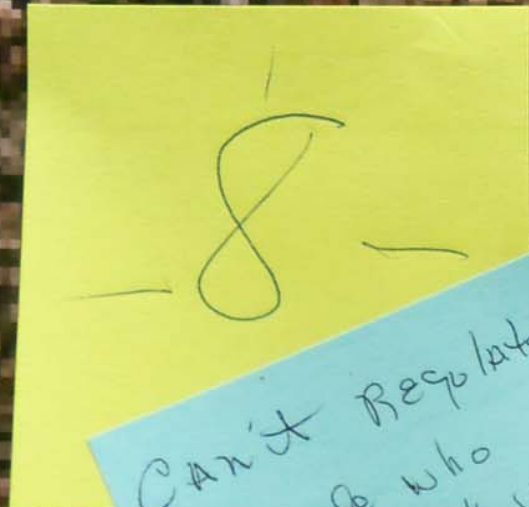
8

3

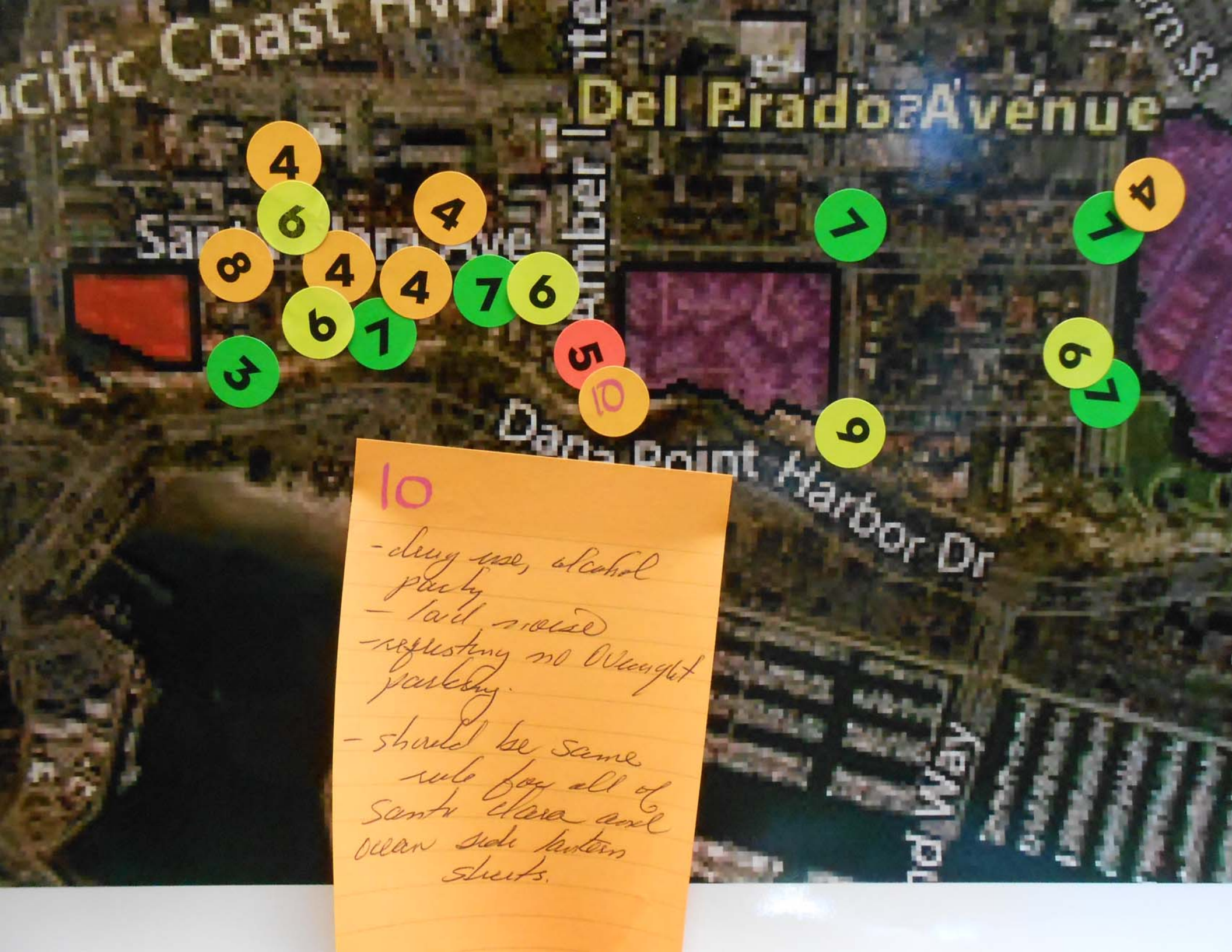
8

8

1



Can't Regulate  
people who  
do not park in  
their garages  
if available @ 4/11



10

- drug use, alcohol party
- loud noise
- requesting no overnight parking.
- should be same rule for all of Santa Clara and ocean side between streets.

9

Restricted parking on  
Blue Lantern is  
adversely impacting  
the residents

Request removal of  
upper end of  
restricted area  
to allow resident  
parking

Dans Travers

Rick Travers: 275-7751

\* Put Bag over sign  
for 30 days to test

#11  
NIQUEL SHORES

Parking STRIKE  
between Residents

They charge \$100  
for parking ticket

City charges \$36<sup>00</sup>

Is that legal?

Does City have any  
influence on HOA's?

Phil Immel



2

2

2

8

8

8

8

8

9

1

8

3

*[Handwritten signature]*

CAN'T REPLICATE  
PEOPLE WHO  
DO NOT PERK IN  
THEIR GARAGES  
Cif Available @ 11/11

1. CARS BLOCKING SIDEWALKS AND DRIVEWAYS

2. NEED MORE ENFORCEMENT

3. RENTAL OVERCROWDING

4. LOCAL EMPLOYEES USING STREET PARKING

5. RV'S, INOPERABLE VEHICLES

6. IMPACTED BY SPECIAL EVENTS AND/OR SCHOOLS

7. VISITOR AND TOURIST STREET PARKING

8. RESIDENTS NOT PARKING IN GARAGES

7. Visitor Street Parking

OTHER COMMENTS:

WRITE CONCERNS OR OPPORTUNITIES ON A POST-IT NOTE AND LOCATE ON THE MAP

## EAST OF SAN JUAN CREEK



Handwritten notes on an orange post-it note, including the name 'Saddieback Memorial Medical Center' and other illegible text.



# EAST OF S



5

5

5

5

5

8

5

2

5

1

5

8

5

5

5

8

2

8

2

8

2

79

155

79

5

5

St Hwy

Canal BITE

Beach Rd

Avenida las Palmas

Calle Rosita

Ave

Campes  
with 9  
9 Central St  
by Sierra

too many cars  
(5-7) @ one  
residence so  
not in other  
valley lanes

CAMPERS  
WITH PEOPLE  
SLEEPING IN THEM  
ON STREET

too many cars  
(5-7) @ one  
residence so  
park in other  
residents zones

5  
8

5

5

5

7

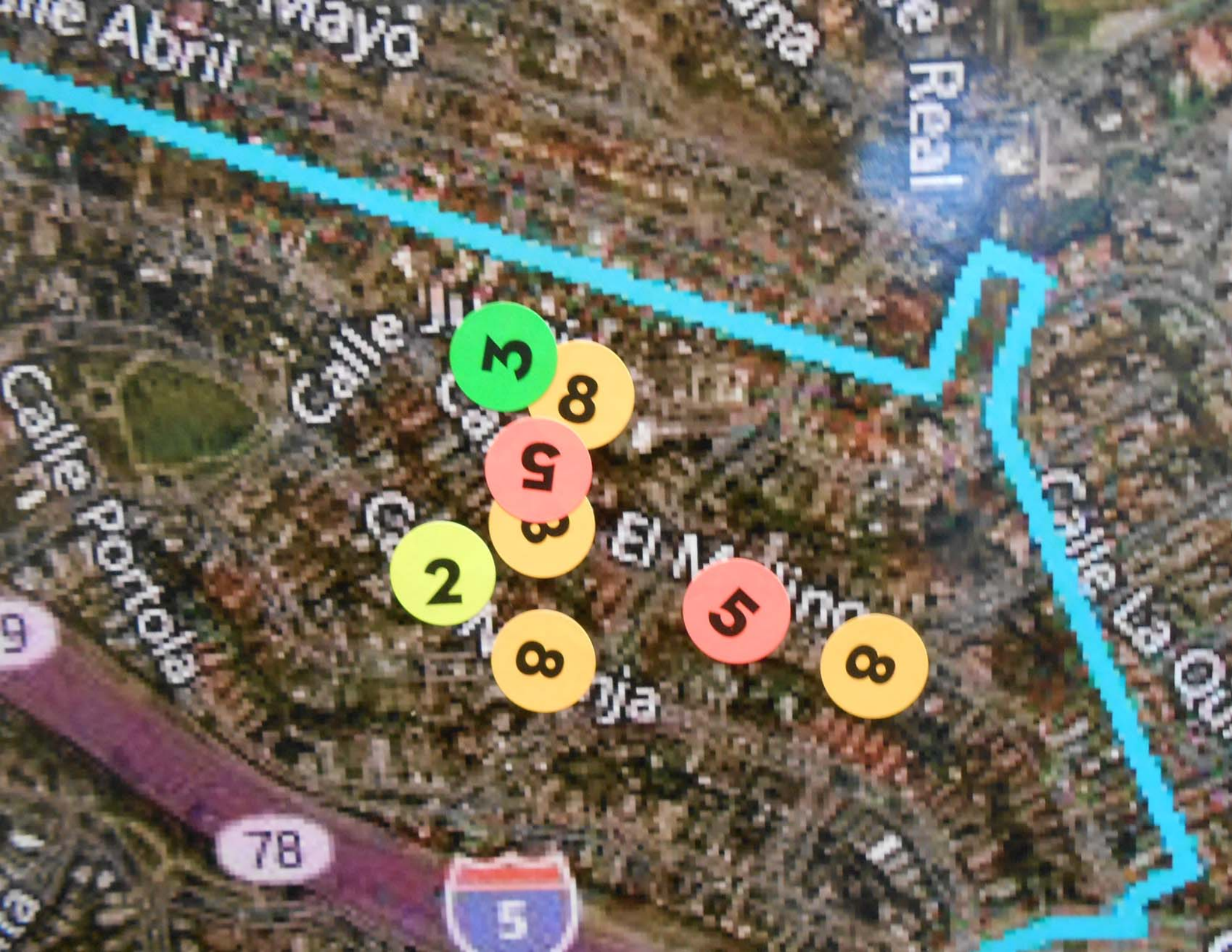
5

Pacific  
Calle  
Calle  
Calle

Avenida las Palmas

Calle 40

ma



3

8

5

3

2

8

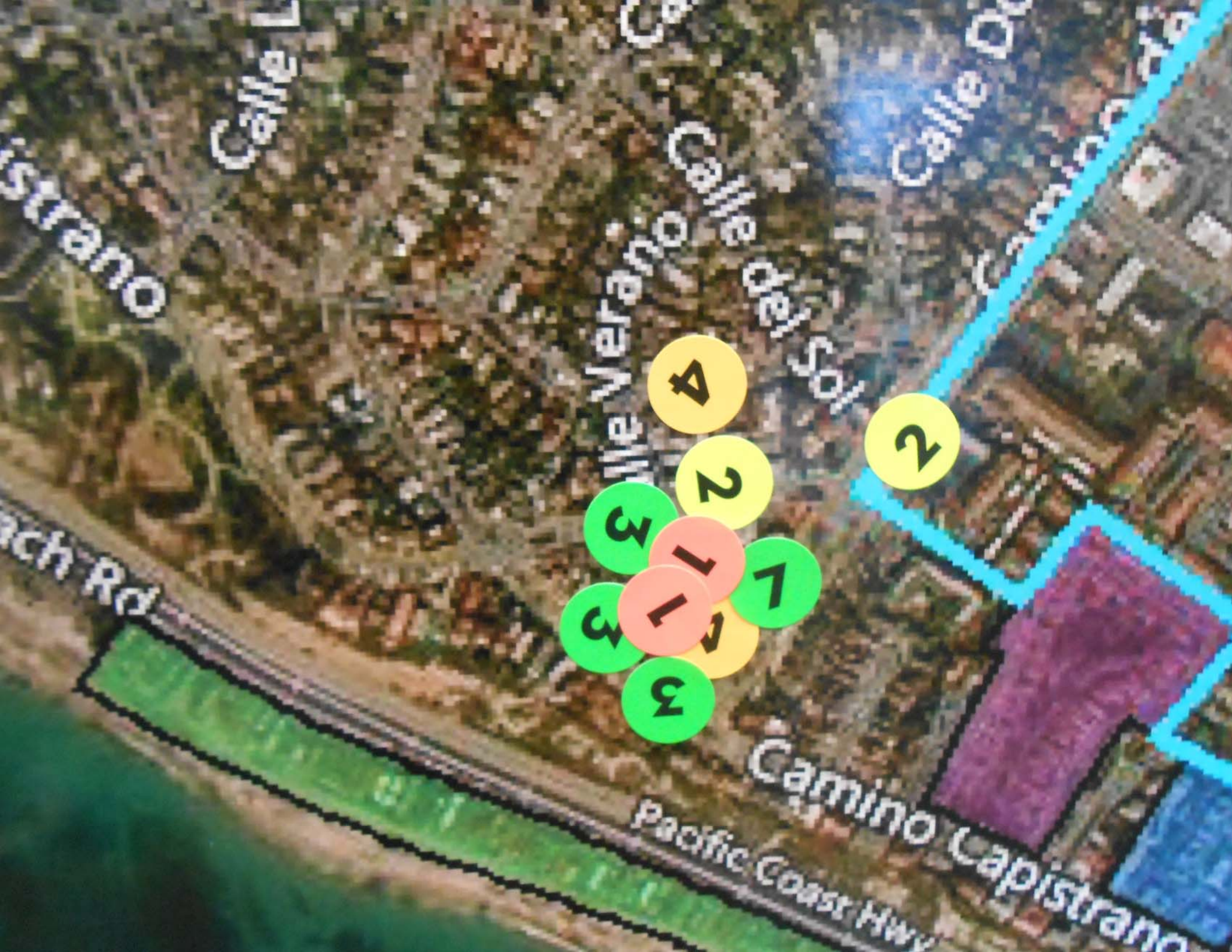
5

8

78

5

9



Calle Lugo

Calle Verano

Calle de los Arboles

Calle Dorado

Calle Capistrano

Beach Rd

Pacific Coast Hwy

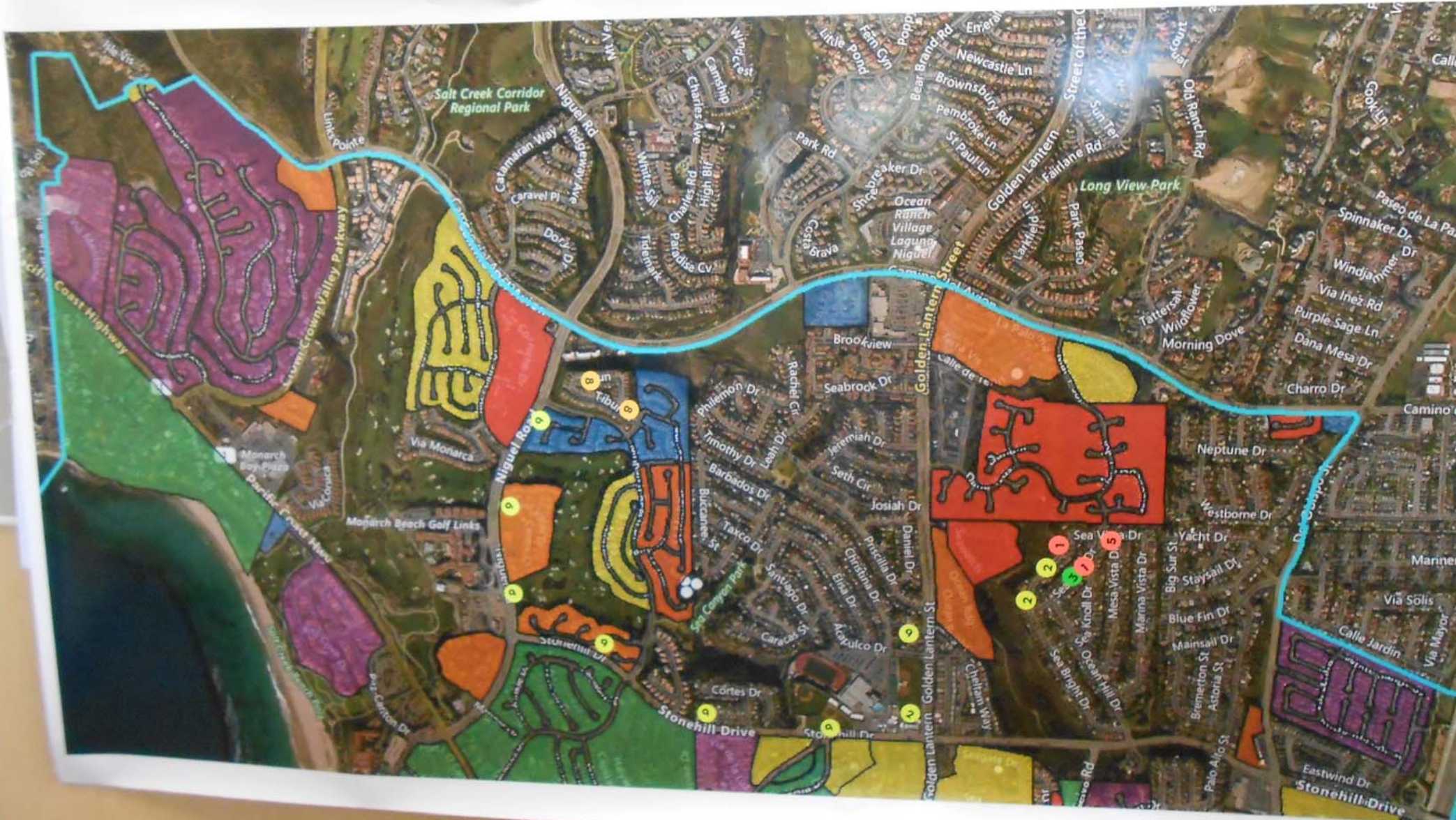
Camino Capistrano

- 4
- 2
- 3
- 1
- 2
- 3
- 4
- 7
- 3
- 3

## PROBLEMS

- SOBER LIVING HOME
- PARKING TOO MANY  
VANS & CARS
- VACATION RESORTS,
- OLD AND NUMEROUS  
PARKED CARS IN  
YARDS AND ON  
STREETS
- STREET SWEEPING
- PARKING NOT  
ENFORCED
- RV PARKING  
IN DRIVEWAYS

# NORTH OF STONEHILL DRIVE





Corniche Dr

Brookview  
Seabrook Dr

Golden Lantern

Terra Vis  
Calle de Te

8

8

9

Niguel Road

Philemon Dr

Rachel Cr

Jeremiah Dr

Monarca

Timothy Dr

Seth Cir

6

AMAS Dr  
Centre Ct

Barbados Dr

Josiah Dr

Golf Links

Buccaneer St

Taxco Dr

Priscilla Dr

Daniell Dr

Niguel

6

Sea Canyon Park

Santiago Dr

Christina Dr

Elisa Dr

Seawatch

Ocean Rdg  
Ocean Bldg

Caracas St

Acapulco Dr

9

Stonehill Dr

9

Golden Lantern St

Cortes Dr

9

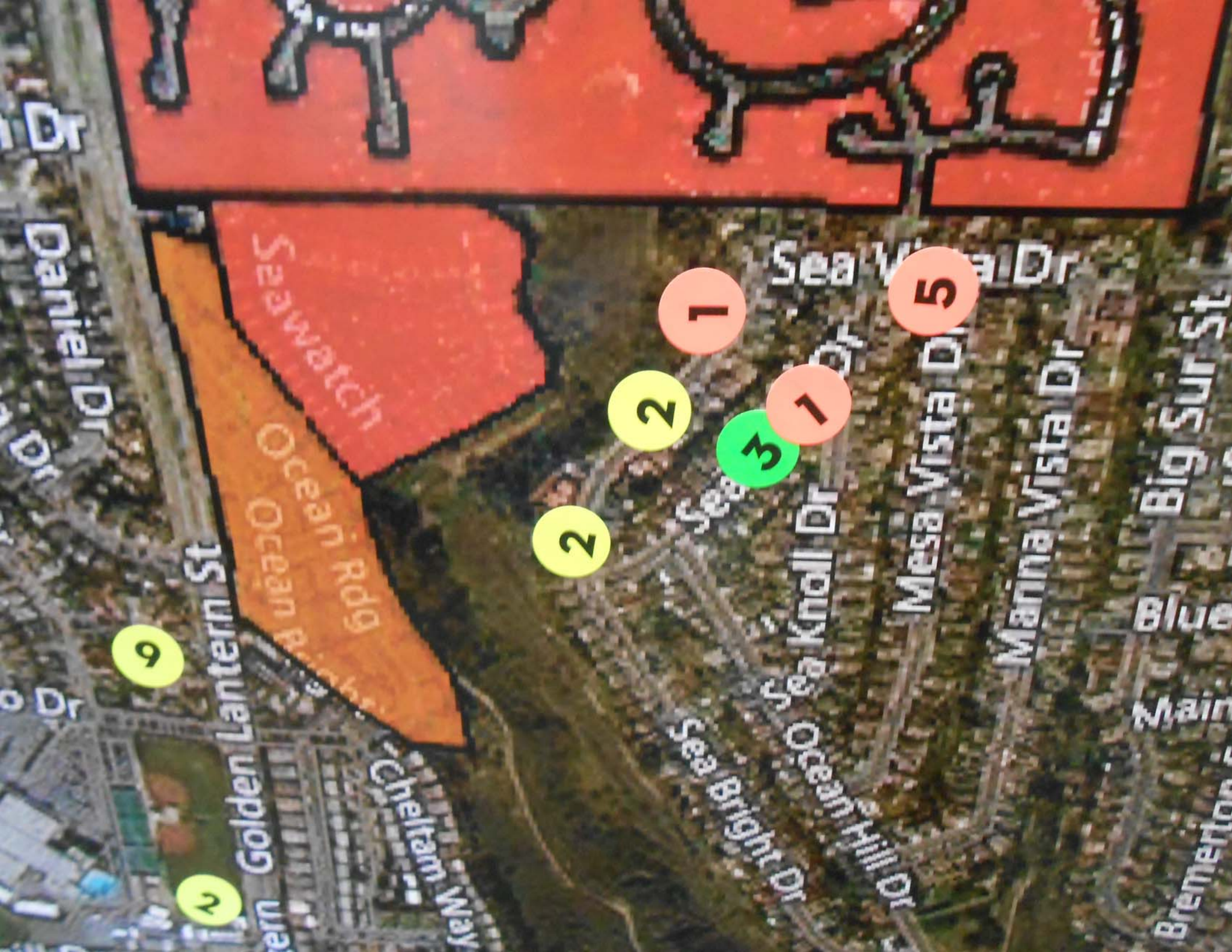
2

Stonehill Drive

Stonehill Dr

Seagate

Via



Daniel Dr

Golden Lantern St

Ocean Rd

Seawatch

Cheltran Way

Sea Vista Dr  
Sea Knoll Dr  
Ocean Hill Dr  
Bright Dr

Mesa Vista Dr  
Manna Vista Dr

Big Sur St  
Bremerton

9

W

2

2

1

3

1

5



**RESIDENTIAL  
NEIGHBORHOODS**



**DRIVEWAYS DO NOT  
COUNT AS DRIVE  
WAYS FOR PURPOSES  
OF A HOUSEHOLD**

- 1. DRIVEWAYS, SIDEWALKS  
AND DRIVEWAYS
- 2. DRIVEWAYS, SIDEWALKS  
AND DRIVEWAYS
- 3. DRIVEWAYS, SIDEWALKS  
AND DRIVEWAYS
- 4. DRIVEWAYS, SIDEWALKS  
AND DRIVEWAYS
- 5. DRIVEWAYS, SIDEWALKS  
AND DRIVEWAYS
- 6. DRIVEWAYS, SIDEWALKS  
AND DRIVEWAYS

**EAST OF SAN**

**GENERAL COMMENTS**  
[Illegible text]

# SOUTH OF STONEHILL DRIVE

Handwritten notes on a pink sticky note, including a list of names and addresses.



Handwritten notes on a light blue sticky note, including a list of names and addresses.

Handwritten notes on an orange sticky note, including a list of names and addresses.

Handwritten notes on two orange sticky notes on the left edge of the map.

THERE ARE MANY  
EXISTING HOUSING  
UNITS THAT ARE  
NONCONFORMING AND  
DO NOT MEET MINIMUM  
ONSITE PARKING  
REQUIREMENTS

CARS BLOCKING SIDEWALKS  
AND DRIVEWAYS

NEED MORE ENFORCEMENT

RENTAL OVERCROWDING

LOCAL EMPLOYEES USING  
STREET PARKING

RV'S, INOPERABLE VEHICLES

IMPACTED BY SPECIAL  
EVENTS AND/OR SCHOOLS

VISITOR AND TOURIST  
STREET PARKING

RESIDENTS NOT PARKING IN  
GARAGES

*Solve Living Homes*

OTHER COMMENTS:

WRITE **CONCERNS** OR  
**OPPORTUNITIES**  
ON A POST-IT NOTE AND  
LOCATE ON THE MAP

